

MLT 629

AGRICULTURAL HANDLING solutions



www.manitou.com

A **PASSION** FOR FARMING



As partners to the farming industry for more than 20 years, we know your business is **demanding**, and on today's modern farm the materials handling plays an important part in the daily farm handling jobs, so you can be sure you'll be able to find within our farming range **THE MANITOU** you need.

The MLT 629 rough terrain telehandler is the ideal choice for performance. Its impressive capabilities enable you

to carry out all your **farm handling** tasks: animal feed, harvesting work, bulk loading and unloading, etc.

Dairy and livestock farmers, cereal growers, co operatives and agricultural contractors will appreciate the qualities of this machine. More than just a handling solution, MANITOU offers you a product which both looks good and is comfortable to use: inside and outside have been cleverly designed to satisfy you. The MLT 629 benefits from innovations such as: JSM^{*}, Evolution cab, ECS^{**}, etc. In short, you gain both in **comfort** and **productivity**.

When you choose MANITOU, you can count on a fork lift truck for long term durability. You also benefit from the package of services provided by your dealer: after-sales service, servicing and maintenance contracts, on-site repairs and financing solutions, etc.

Why all this? Because, like you, we take pleasure in a **job well done!**



^{*} Joystick Switch and Move, patent applied for by MANITOU BF

^{**} Easy Connect System: hydraulic decompression of the accessory line

“A real agricultural
handling **solution**”



PERFORMANCE ON YOUR FARM

2900 kg:

The MLT 629's maximum capacity allows you to move up to 2.9 tonnes.

2 widths:

2 m with 20" tyres or 2.16 m with 24" tyres. You choose the dimensions that best suit your needs.

3 heights:

You choose the height that suits you thanks to the range of models proposed.



Simply compact!

Very compact dimensions allow you to reach even the most confined areas of your farm. With widths ranging from 2 m to 2.16 m, the MLT 629 provides easy access to your buildings and allows you to work in areas that others cannot reach.



Goes anywhere

The MLT 629 is equipped as standard with agricultural tread tyres. Providing the capability to work on all types of ground conditions increasing the versatility and performance on a daily basis.

In accordance with your needs

For each operation there are different needs, **tyres 20" or 24"**, **road compliance**, **cab sizes** (low profile and wide options)... you can have the machine you need.



YOU FEEL GOOD...



Farming has changed a lot, handling as well.

The interior of the MLT leaves nothing to be desired with its superb bodywork. The driving position has been **ergonomically designed** for maximum comfort. It is fitted with a cloth seat and the fully adjustable steering column can be adapted to suit. Ventilation outlets, sun visor, roof screen, etc. all help to provide you with a comfortable working environment.

Exclusive to Manitou, **JSM®** lets you control all movements with one hand safely and effortlessly: raising and lowering the boom, crowding and tilting, auxiliary service for operating attachments and also forward/reverse direction of travel. You always keep one hand on the steering wheel to maintain full control of your MLT.

Low noise levels are achieved through the full **soundproofing** of the cab and the insulation of the engine compartment.

The dashboard has an analogue display which gives all the information you need during your working day: hour meter, speed, oil temperature, fuel level, etc.

A compact machine with a **spacious cab**, we have not compromised the space you have available: you will feel at ease in your cab and appreciate the time spent at the controls of your MLT.





**“...but you have
to go home
in the end!”**



**“Adapting
to your requirements”**

EACH TO THEIR OWN **STYLE**

Reacting to customer choice is a MANITOU principle.
That's the reason you **can choose between** 3 levels of finish: **CLASSIC**, **PREMIUM** and **ELITE**.

Because all your requirements are important, MANITOU provides you with complete peace of mind in all versions of the MLT 629.



CLASSIC

In the **Classic** version, your comfort is increased by:

- Mechanical cloth seat
- Rear-view mirror
- Radio player

PREMIUM

You are not just opting for a MANITOU, but for **your** MANITOU...
The **Premium** finish is differentiated by a number of practical and innovative items:

- Pneumatic cloth seat
- CD/MP3 car radio
- Air conditioning
- Rear-view mirror
- Easy Connect System

ELITE

The **Elite** version offers a top specification model:

- Pneumatic cloth seat with active suspension
- Bluetooth car radio
- Air conditioning
- Boom suspension
- Rear-view mirror
- Easy Connect System

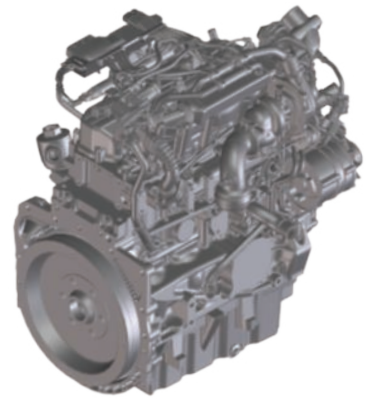
**“Optimising
the power of
your engine”**



DESIGNED TO OPTIMISE POWER AND FUEL EFFICIENCY

Each telescopic forklift has a suitable engine compatibility to achieve the optimum power to torque ratio. Too little power and you lose efficiency, too much power could increase consumption to no effect.

The decision to fit the new **Perkins stage 3 B** 4 cylinder **3.4 litre Turbo** engine to the MLT 629 is evidence of our continuous desire to stay ahead of the regulations.



All the major components of your machine (power unit, transmission, axles, hydraulics and tyres) are combined in such a way as to optimise the power produced by your engine.

Whether operating or travelling, the flexible and extremely precise **4-speed mechanical gearbox** allows you to travel at speeds up to 32 kph*.

* Speed varies according to national legislation.

102 HP:

The 102 HP of your MLT 629 gives you moderate fuel consumption daily thanks to its ideal power/weight ratio.

4 speed gearbox:

Flexibility and precision are the watchwords with the 4-speed mechanical gearbox which allows gear changing under load.

**“Working
quickly and well”**



YOU WILL HAVE TIME TO SPARE

Save yourself time to concentrate on what matters - that's MANITOU's philosophy when it comes to handling: speed of execution of movements and driver comfort are good examples.

The hydraulic gear pump provides exceptional quickness of movements for a machine of this size. Combined with JSM® and height adjustable armrests, it enables you to achieve fast working cycles.

For maximum efficiency, MANITOU offers you a machine which is simple to use. **Quick and easy to learn** (JSM®, controls perfectly placed), your machine is the solution to all your farm handling duties.

Manœuvrability is essential! With your MLT 629, you will be able to do even more work enabling you to work in restricted areas.

Your productivity and safety is greatly enhanced by a wide range of attachments which increases the performance and overall utilisation of your machine. The development of our machinery with approved accessories optimises your work cycles while respecting all relevant industry standards. An extensive choice of attachments from bale grabs, manure forks, buckets, silage distributors... MANITOU is with you to meet all your needs.

To maximise your bulk handling operations, MANITOU has developed an entirely new agricultural bucket range, with two types of buckets now available for the MLT 629, with different widths for increased utilisation.



22 seconds:

Your MLT 629 allows you to carry out a full handling cycle in only 22 seconds.

4 x 4 x 4:

4 wheel drive and 4 wheel steer = manœuvrability for getting out of all situations.

YOU ARE SAFE

SORRY, WE DON'T DESIGN TOYS

Our **design department**, employing more than 200 engineers and technicians, have specialised in the design of agricultural telehandlers **for more than 20 years**. With more than 50 registered patents, our knowledge and expertise with regard to the structure of the machine offers you reliability and durability. A fully comprehensive testing procedure and «best practice» methods are applied to ensure quality manufacturing at all levels, utilising all the latest modern technology.

Specialists in agriculture, MANITOU develop their product range with the customer in mind, selecting components to suit the most arduous farm handling needs, **your machine like the MANITOU company is 100% dedicated to agriculture**: the tyres, transmission and even the cooling system have been logically chosen and assembled.

“The assurance of
working
in total safety”





“A machine **100%** dedicated to **agricultural** use”



YOU ARE PROTECTED

Your working environment must above all be a safe area.

The excellent **stability** of the MLT 629 combined with the aggravating movement arrestor allow you to handle loads up to **2.9 tonnes** with complete confidence.

Your **safety** is further reinforced by the **presence detector** located in the seat. Travel movements are only allowed when you are sitting in the driving seat.

The cab has been especially designed to protect you. Satisfying **ROPS/FOPS*** **requirements**, withstanding rolling over, heavy objects falling and therefore prevents distortion to the cab.

A large window area provides exceptional visibility which is also achieved through the contoured design of the engine canopy and the low boom pivot.

* ROPS: rollover protection structure
FOPS: falling objects protection structure

SEE FURTHER

OFFERING YOU **MADE-TO-MEASURE SERVICES**

The close proximity of a network of experts at your service.

Your local MANITOU dealer is dedicated to providing a first class after sales back up. The know-how, experience and commitment of MANITOU, at more than 500 dealers throughout the world, ensure you will have professional support on a daily basis.

Lease and Finance Solutions. Your MANITOU dealer is your best partner to assist you in your financial planning. Manitou Finance offer a fully flexible choice of financial solutions.

Maintenance and after-sales service: so that your telehandler is operational all year round, your dealer can offer you maintenance contracts suited to your budget and your needs. You will reduce your usage costs and have the guarantee of your equipment being regularly monitored. MANITOU is committed to maintaining your productivity on a daily basis.



A financial contract allowing you to be aware in advance of the technician's labour and travel costs for preventive maintenance of your machine (parts and supplies not included in the contract).



Maintenance contract which includes the totality of the cost of preventive maintenance for your machine -labour, travel, supply of consumables needed for periodic maintenance.

MANIPLUS Agri

You can sign up for an extension of guarantee of 12 or 24 months.



A simple and flexible fleet-management system (with or without geolocation) to keep track with precision of the utilisation of your machine.





“Accompanying
the changes in
your business”



REDUCE YOUR ECOLOGICAL FOOTPRINT

From the design stage of your machine, MANITOU does everything to **respect the environment**.

Our Ancenis production site, certified **ISO 14001***, guarantees that environmental standards are included from the design stage of the product up to the delivery of the machine to your business. Daily routine procedures include the selection of the least polluting components, selective sorting, treatment of special wastes and quite simply daily vigilance (energy, paper savings, etc.).

The optimum management of the engine speed according to the power demanded and the reduction in cubic capacity of our stage III B engine reduce the impact of the use of your MLT on the environment.

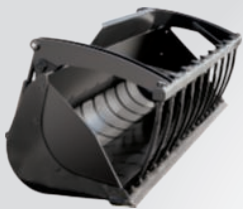
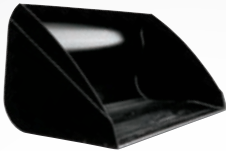



* ISO 14001: international environmental management standard which lays down requirements relating to the implementation of an environment management system.

YOU CHOOSE

Standard and optional equipment	 CLASSIC	 PREMIUM	 ELITE
Fork carriage	●	●	●
Rear-view mirror	●	●	●
Radio player	●	-	-
CD/MP3 car radio	○	●	-
Bluetooth car radio	○	○	●
Cloth seat	●	-	-
Pneumatic cloth seat	○	●	-
Pneumatic cloth seat with active suspension	○	○	●
Air conditioning	○	●	●
Easy Connect System	○	●	●
Boom suspension	○	○	●
Hydraulic locking (accessories)	○	○	○
Self-cleaning pre-filter	○	○	○
TURBO II pre-filter	○	○	○
Reversing warning buzzer	○	○	○
Internal rear-view mirror	○	○	○

● Standard ○ Option - Not available

A selection of attachments available:

		
Multifunction grab bucket	Light Material Bucket	Wrapped Bale Clamp
		
Feeding Bucket	Bale Clamp Intensive	

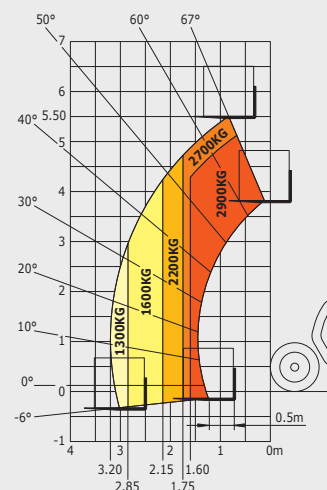
MLT 629

MLT 629 20"/20" C MLT 629 24"

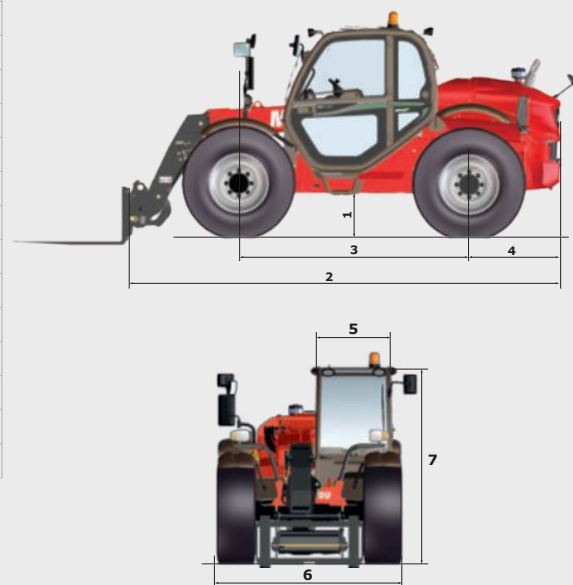
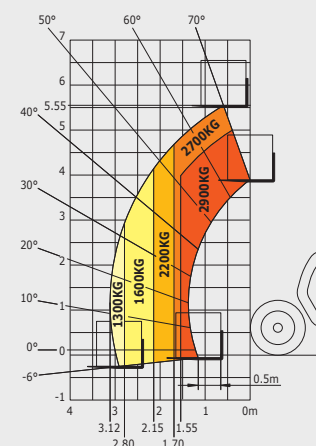
Lifting		
Max. capacity	2900 kg	
Max. lifting height	5.5 m	5.55 m
Max. outreach	3.2 m	3.12 m
Reach at max. height	0.9 m	0.75 m
Break-out force with bucket	4160 daN	
Unladen time		
Lifting	7.71 secs	8.14 secs
Lowering	5.66 secs	5.65 secs
Extension	5.67 secs	5.63 secs
Retraction	3.5 secs	3.87 secs
Crowd	3.66 secs	
Dump	3.47 secs	
Tyres	400/70 R 20	460/70 R 24
Braking		
Service brake	hydraulic oil-immersed multi-disc	
Parking brake	mechanical oil-immersed multi-disc	
Engine	PERKINS - STAGE 3B	
Type	854E-34TA	
Cubic capacity	3400 cm³	
Power	102 HP/75 kW TURBO	
Max. torque	420 Nm - 1400 rpm	
Injection	direct	
Cooling	water + air	
Laden drawbar pull	7100 daN	
Transmission		
Gearbox	torque converter	
Reversing shift	electrohydraulic control	
Number of gears (forward/reverse)	4/4	
Max. travel speed (may vary according to applicable regulations)	28 kph	32 kph
Hydraulics		
Pump	gear type 85 l/min - 260 bar	
Capacities		
Hydraulic oil	98 l	
Fuel	104 l	
Unladen weight (with forks)	6025 kg	6225 kg
Dimensions		
1. Ground clearance	0.40 m	0.49 m
2. Overall length to carriage	4.83 m	
3. Wheelbase	2.52 m	
4. Rear wheel centre to rear face	1.01 m	
5. Overall width of cab	0.86 m	
6. Overall width	2.00 m	2.16 m
7. Overall height	2.21 m / 2.06 m	2.30 m
Standard forks (length x width x thickness)	1200 x 125 x 45 mm	
Turning radius (over tyres)	3.58 m	3.62 m

Rough Terrain Load Chart
standard EN1459 B

Machine on tyres 20" with forks



Machine on tyres 24" with forks



This brochure describes versions and configuration options for MANITOU products which may be fitted with different equipment. The equipment described in this brochure may be standard, optional or not available depending on version. MANITOU reserves the right to change the specifications shown and described at any time and without prior warning. The manufacturer is not liable for the specifications given. For more information, contact your MANITOU dealer. Non-contractual document. Product descriptions may differ from actual products. List of specifications is not comprehensive. The logos and visual identity of the company are the property of MANITOU and may not be used without authorisation. All rights reserved. The photos and diagrams contained in this brochure are provided for information only.

MANITOU BF SA - Limited company with board of directors - Share capital: 39,547,824 euros - 857 802 508 RCS Nantes



Your nearest **MANITOU** dealer:



Head office:
B.P. 249 - 430 rue de l'Aubinière - 44158 Ancenis Cedex - France
Tel: 00 33 (0)2 40 09 10 11 - Fax: 00 33 (0)2 40 09 10 97
www.manitou.com