

BM 8360

Interroll Belt Conveyor

Curve

24 V powered



Product Description

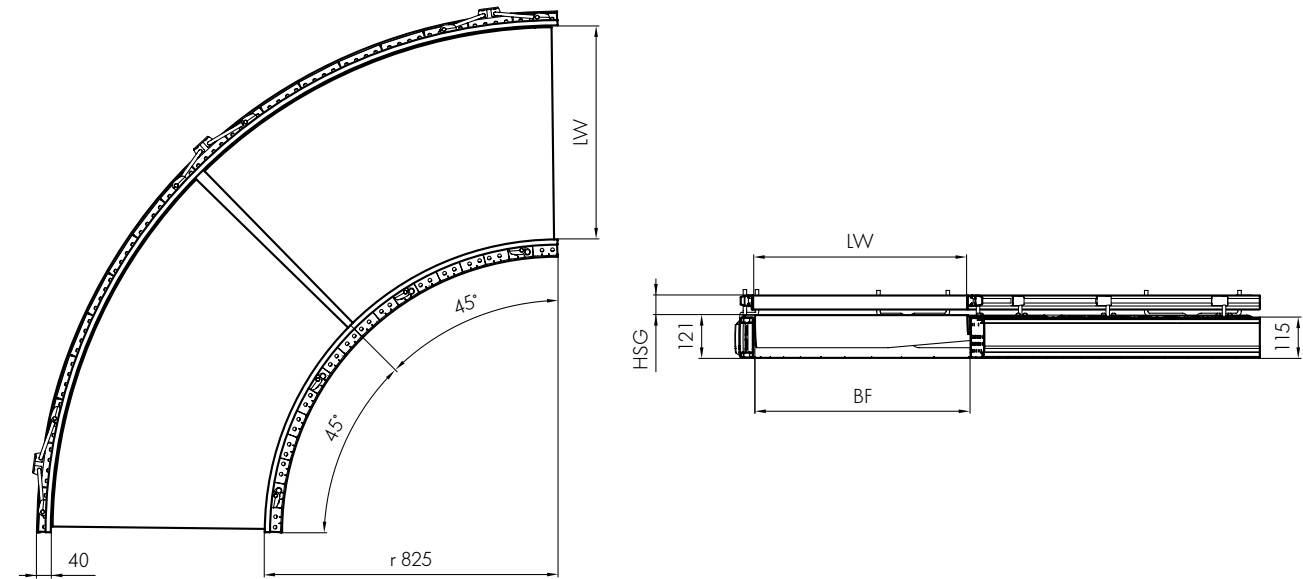
The Belt Curve Light is a belt curve that is divided into zones and operates with zero pressure accumulation; its drive is based on the 24 V RollerDrive. It is possible to transport and store small products, as well as products not suitable for roller tracks. Not suitable for reversing operation.

Technical data

| | | |
|------------------------|------------------------------|--------------------------------|
| General technical data | Max. load capacity per zone* | 20 kg |
| | Conveyor speed* | Max. 0.5 m/s |
| | Incline/decline | Not suitable |
| | Ambient temperature | +5 to +40 °C |
| Drive | Rated voltage | 24 V |
| | Motor type | Interroll RollerDrive EC310 |
| | Number of zones (N) | 1 at 45° 2 at 90° |
| | Control | MultiControl |
| Material | Conveyor belt | Polyester with PVC coating |
| | Slider bed | Rollers, Interroll Series 1700 |

* The combination of maximum values is not always possible.

Dimensions



| | | |
|-----|-------------------|--|
| BF | Between frames | 420, 620 mm others on request |
| LW | Lane width | LW (+120/-90 with flexible side guide) |
| α | Angle | 1 x 45°/90° (2 x 45°) |
| TW | Module width | BF + 80 mm |
| HSG | Height side guide | 35 - 65 mm |

Scope of supply

- Module is completely assembled and prewired
- Supply incl. 1 sensor per zone
- Please order support stands and end caps separately