

HEAVY-DUTY CONVEYOR ROLLER SERIES 3600

Sturdy, reliable, cost-effective standard solution

Customer
benefits

- Exceptionally low-noise operation
 - Drive heads made of fibreglass-reinforced, viscoplastic polyamide
- Drive elements secured against twisting and axial movement against the tube
 - Form-fit join with notches at the tube ends
- Comprehensive drive versions
 - Roller-to-roller and tangential chain drive, toothed belt drive
- Gentle lateral pushing of the materials to be conveyed
 - Rounded tube ends

Applications

- In-house driven conveyance of heavy materials to be conveyed
- Pallets, steel containers etc.

Properties

- Sealed precision ball bearing (6204 2RZ, 6205 2RZ)

Associated
platform

- Platform 1450

Technical Data

General technical data	
Max. load capacity	3,500 N
Max. conveyor speed	0.50 m/s
Temperature range	0 to +40 °C
Materials	
Bearing housing	Polyamide
Drive head	Polyamide
Seal	Polyamide
Ball bearing	Steel 6204 2RZ, 6205 2RZ

Load capacity

The dynamic load and the surface load are the assumptions for the load capacity.

Female threaded shaft version

Ø Tube mm	Torque transmission	Max. load capacity in N							
		with an installation length of mm							
		200	400	600	800	1,000	1,200	1,400	1,600
80 x 3	Polymer sprocket	3,500	3,500	3,500	3,500	3,500	3,500	3,500	3,500
89 x 3									
80 x 3	2 polymer sprockets or toothed belt head	3,500	3,500	3,150	3,000	2,930	2,880	2,850	2,820
89 x 3									

Product Selection

Female threaded shaft version

Tube			Ball bearing	Shaft	
Material	Ø mm	Torque transmission		Reference number	
				Ø 20 mm (M12 x 20) without flange	Ø 20 mm (M12 x 20) with flange
Steel, zinc-plated	80 x 3.0	Toothed belt head	6205 2RZ 6204 2RZ	3.6AZ.J8E.S38	3.6AZ.J8D.S38
		Polymer sprocket 5/8", Z = 18	6205 2RZ 6204 2RZ	3.6AJ.J8E.S42	3.6AJ.J8D.S42
		Polymer sprocket 5/8", Z = 15	6205 2RZ 6204 2RZ	3.6AC.J8E.S42	3.6AC.J8D.S42
		2 Polymer sprockets 5/8", Z = 18	6205 2RZ 6204 2RZ	3.6AK.J8E.S38	3.6AK.J8D.S38
		2 polymer sprockets 5/8", Z = 15	6205 2RZ 6204 2RZ	3.6AD.J8E.S38	3.6AD.J8D.S38
	89 x 3.0	Toothed belt head	6205 2RZ 6204 2RZ	3.6AX.J90.S38	3.6AX.J8C.S38
		Polymer sprocket 5/8", Z = 18	6205 2RZ 6204 2RZ	3.6AL.J90.S42	3.6AL.J8C.S42
		Polymer sprocket 5/8", Z = 15	6205 2RZ 6204 2RZ	3.6AE.J90.S42	3.6AE.J8C.S42
		2 polymer sprockets 5/8", Z = 18	6205 2RZ 6204 2RZ	3.6AM.J90.S38	3.6AM.J8C.S38
		2 polymer sprockets 5/8", Z = 15	6205 2RZ 6204 2RZ	3.6AF.J90.S38	3.6AF.J8C.S38

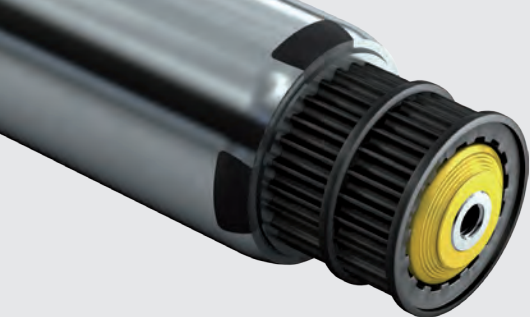
On request, we can offer you further options in addition to our standard products (cf. the following double page).

Example for a reference number: 3.6AC.J8E.S42 - 464

This reference number is for a Conveyor Roller Series 3600, steel, zinc-plated, Ø tube 80 mm, polymer sprocket 5/8", Z= = 15, Ø shaft 20 mm, female threaded shaft without flange and reference length 464 mm. The reference length RL can be found on the dimensioned drawing: RL = EL - 36. The axial play of 0.5 mm per side has already been taken into account. The nominal clearance of your conveyor is 500 mm, which also corresponds to the installation length EL, i. e. the reference length is: 500 - 36 = 464 mm.

Standards

Order example



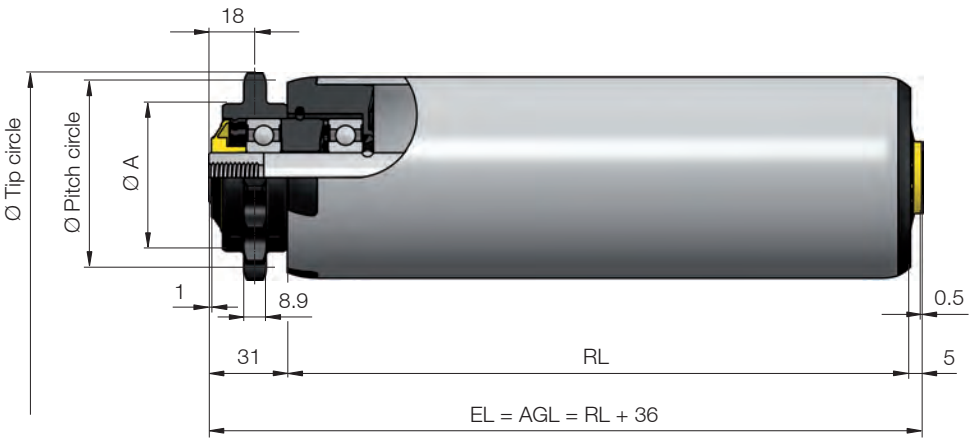
HEAVY-DUTY CONVEYOR ROLLER SERIES 3600

Sturdy, reliable, cost-effective standard solution

Dimensions

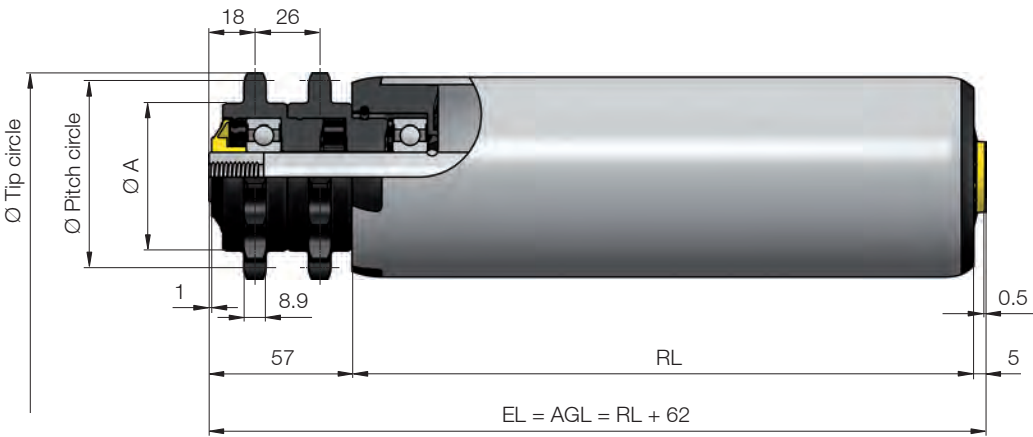
RL	Reference length/Ordering length
EL	Installation length
AGL	Total length of shaft

Dimensions for polymer sprocket 5/8", without flange



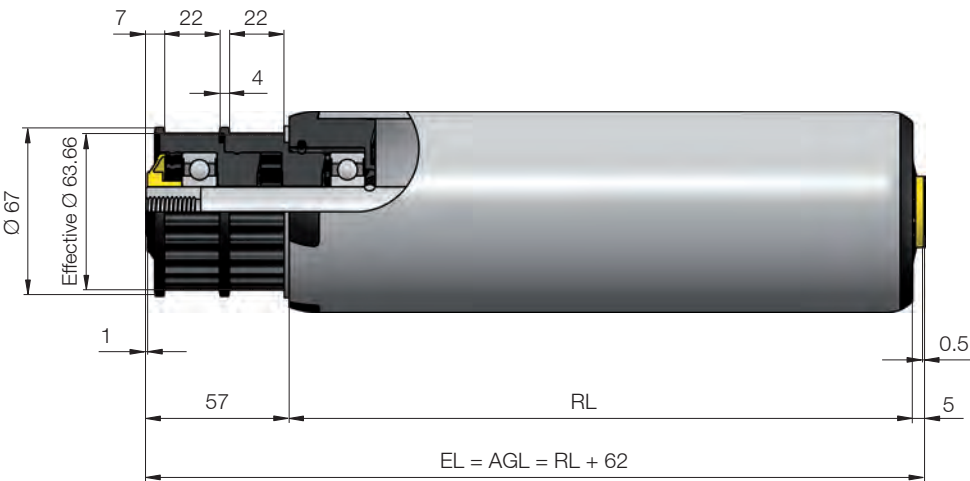
Number of teeth	Ø Tip circle mm	Ø Pitch circle mm	Ø A mm
15	83	76.36	59
18	98	91.42	66

Dimensions for 2 polymer sprockets 5/8", without flange

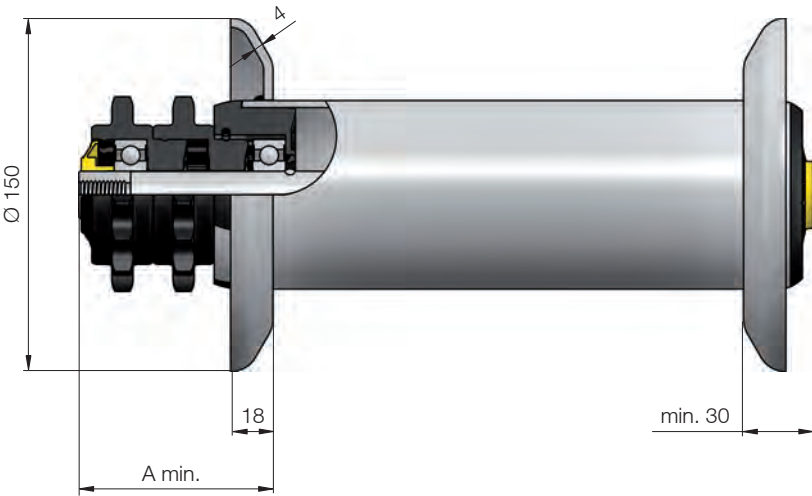


Number of teeth	Ø Tip circle mm	Ø Pitch circle mm	Ø A mm
15	83	76.36	59
18	98	91.42	66

Dimensions for toothed belt head without flange



Dimensions for flange



Drive	Pitch A of flange mm
Sprocket	Min. 56
2 sprockets	Min. 82
Toothed belt	Min. 82

Options

We can offer you the following options in addition to our standard products:

- Steel tube, zinc-plated Ø 80 x 2 mm