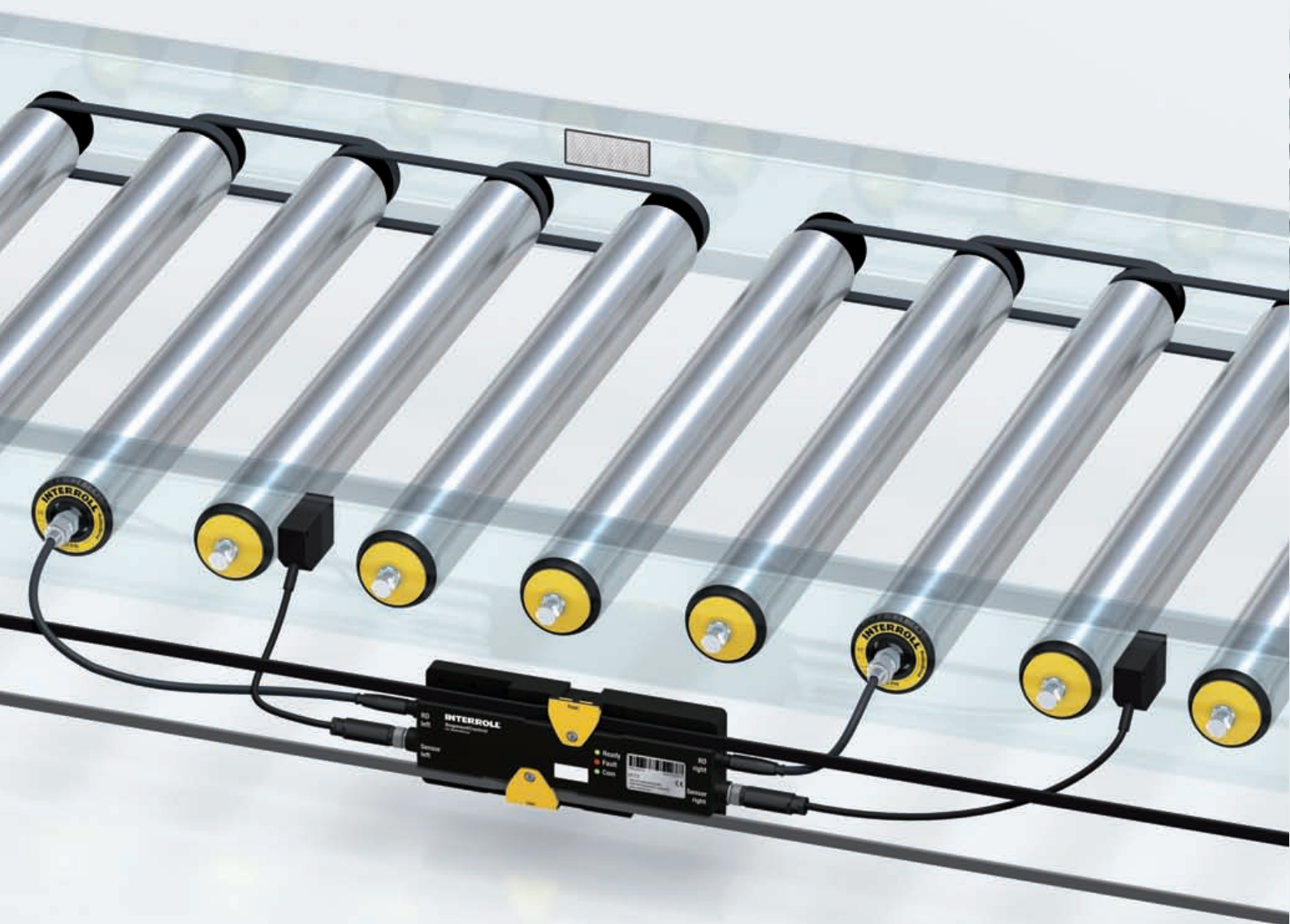


PRODUCT INFORMATION



INSPIRED BY
EFFICIENCY



INTERROLL CONVEYOR CONTROL

A NEW DIMENSION IN ZERO PRESSURE
ACCUMULATION CONVEYING TECHNOLOGY

INTERROLL CONVEYOR CONTROL: FOR 24 V DC



RAPID INSTALLATION, FLEXIBLE CONFIGURATION AND IP54 PROTECTION RATING

Interroll's ConveyorControl allows for maximum cost efficiency with 24VDC Technology. The mechanical advantage and optimum control technology combined complement each other. The control platform consists of four different modules, a power pack and configuration software that are matched for optimum performance. The overall solution can be installed and commissioned rapidly; this ease of installation is suitable for industrial applications.

The **independent length of cable concept**, while incorporating the piercing technology, provides rapid and low cost installations. This proven design enhances the reliability of the overall system.

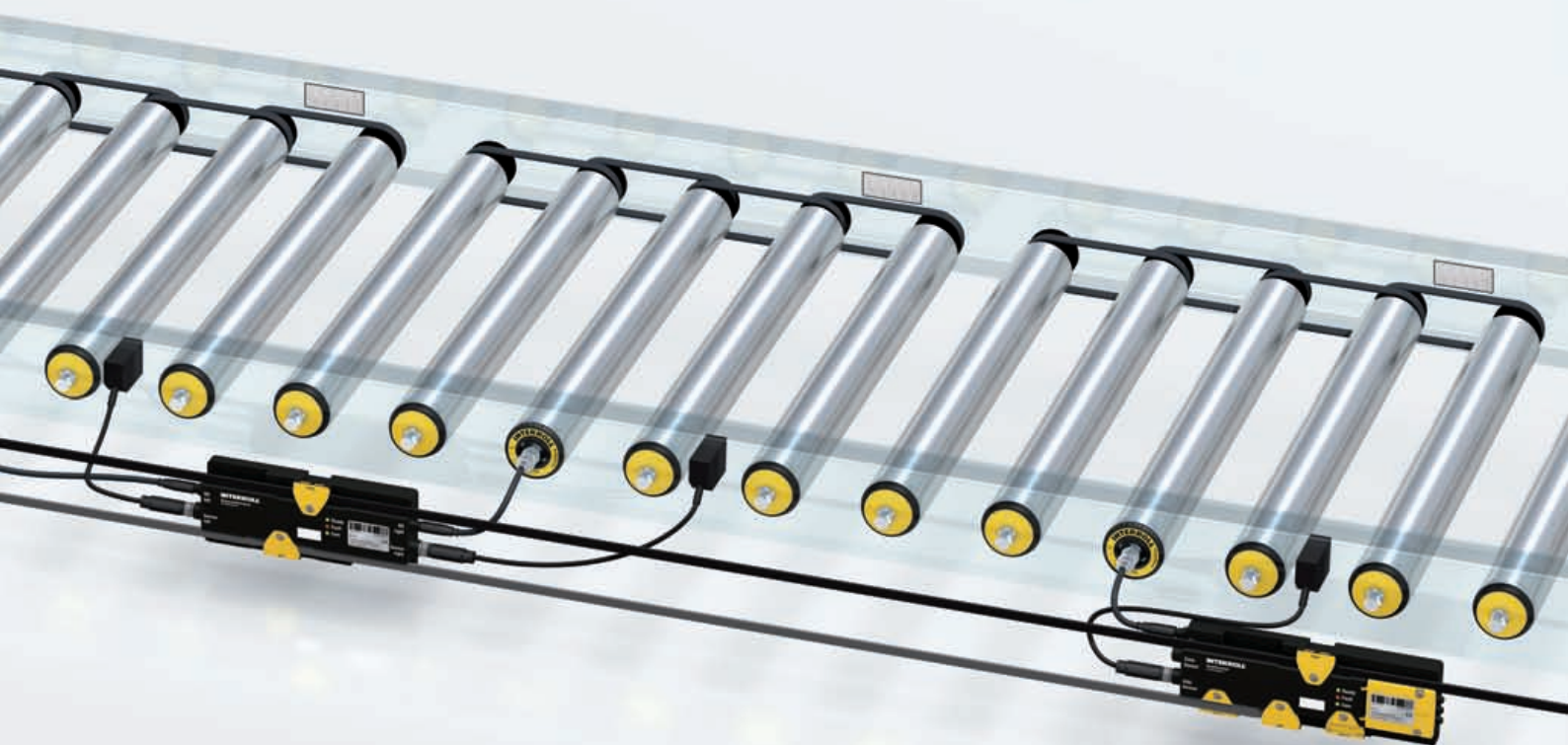
The **IP54 protection** rating satisfies the industrial standard for these type applications. This protection rating eliminates the need for additional enclosures to satisfy the protection rating.

Flexible configuration of the interfaces provides networking integration that would not be possible in standard configurations.

We have two distinct modules: CentralControl – Allows ConveyorControl to be configured and all parameters created through a PC interface. Software supplied with this module facilitates adaption to a wide range of conveyor applications.



THE OPTIMUM CONTROL SOLUTION CONVEYOR TECHNOLOGY



This allows for a broader range of applications than presently exist in the market at this time. Utilizing preset standard functionality, there is no requirement for timely and costly programming with PLC.

GatewayControl – Allows connection to Profibus and Profinet environments. Using a GSD File, ConveyorControl is integrated into higher level control.

The ideal solution for optimized cabling, with 24 VDC, Central or Decentralized system is ConveyorControl.

Interroll RollerDrive and ConveyorControl combined, provide efficient, swift and reliable drive and controls, and set new standards in unit conveyor technology.





ROLLERDRIVE EC310

Utilizing nine different gear stages combined with 32 watt mechanical output, EC310 will address a wide range of applications. Some of these applications include unit conveyor facilities, high throughput rate facilities and light duty pallet conveyor technology.

EC310 moves all types of products quietly, efficiently and reliably. The energy feedback in deceleration mode provides up to 30 % energy savings in the overall system.

FLAT RIBBON CABLE

Rapid and simplified cabling of the system is ensured utilizing standard commercial flat ribbon conductors in AS interface standard.

The flat ribbon cable is connected using piercing technology, with cable cross sections of 2.5 mm² for voltage supply and 1.5 mm² for data lines.



SEGMENTCONTROL

Segment control utilizes two sensors and RollerDrives. The SegmentControl can then control two zones of a conveyor system. Parameters for the switching logic of the sensors can be created easily in the Configurator.

The addressing of the SegmentControl and other modules is done by a magnetic contact, thus no further operating elements are needed. Three LEDs immediately display different statuses.



COMCONTROL

This is used for single zone control of the conveyor system. It has three inputs and outputs. Two outputs are supplied with voltage from the system and 0.5 amps can be applied, the remaining output is a relay contact.

Terminals are integrated within an IP 54 rated enclosure. Input and output functions can be created freely in Configurator.



CENTRALCONTROL

This is an USB Interface that is used for uploading mapping and settings for a conveyor with a PC and Configurator.

This control is not used for zone control and is used for monitoring data communication between modules.



GATEWAYCONTROL

GatewayControl is used to connect ConveyorControl to higher-level controls in the system architecture and to integrate it into the network of an existing system.

Two types of GatewayControl exist depending on the type of bus available – Profibus and Profinet.

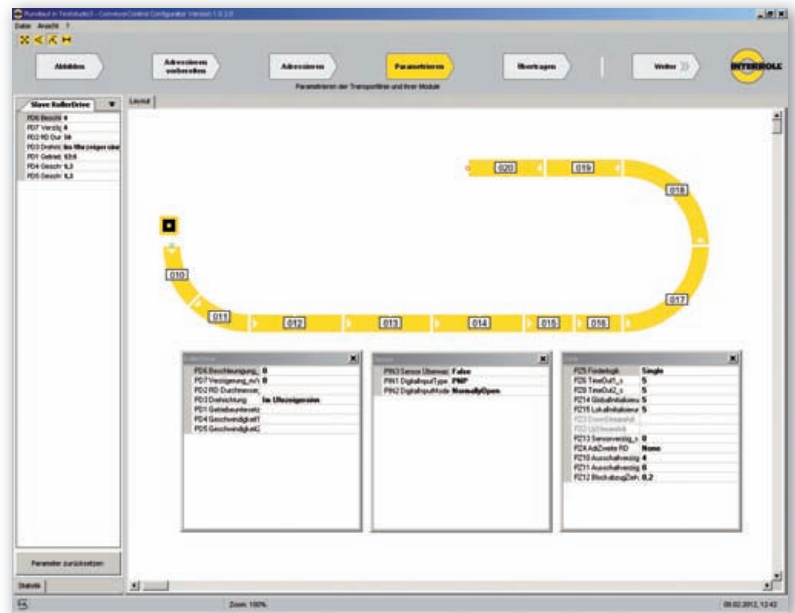




CONFIGURATOR

This is a PC based graphic user interface used for setting mandatory parameters of the ConveyorControl. Mandatory Parameters:

- Accumulation Logic
- Direction of Accumulation
- Sensor Type
- Rotational Direction of the RollerDrive
- Acceleration/Deceleration of RollerDrives
- Speed
- Speed changes via I/O
- I/O Stop
- I/O



POWERCONTROL

This controls the required supply voltage for 24 VDC ConveyorControl. A 3 phase 400 V power pack provides 480 Watts via two 24 VDC outputs. Peak rating of 816 Watts can supply between 6 and 12 EC310 RollerDrives, depending on the application.

The cable bushings are designed for flat ribbon cable, but round cable with IP54 can also be utilized.





INSPIRED BY
EFFICIENCY

Interroll is the most global core product provider for material handling solutions. Headquartered in Sant'Antonino (Switzerland), we are present in more than 29 countries.

Please find all sales contacts and addresses at **interroll.com**

Interroll reserves the right to modify the technical characteristics of all its products at any time.

Technical information, dimensions, data and characteristics are indicative only.