

mauser

intelligent furniture – since 1896

The
mauser 409 Shelving System



More organization throughout.

Shelving systems for offices, archive facilities, libraries, museums
and retail outlets – from mauser of course.



More Organization

With the mauser 409 shelving system

mauser 409. More organization throughout. From offices to libraries. From shops to storage and archive facilities.

The mauser 409 shelving system - available as static, mobile or mini-mobile shelving - enables you to utilize storage space to maximum efficiency. Its modular design provides custom solutions in offices, archives, libraries, museums, retail and storage space and for a wide range of other applications.

**The mauser brand.
Quality steel products. For more than 80 years.**

mauser has a history of manufacturing steel shelving systems and office furniture that stretches back over 80 years. The first successful steel products were manufactured back in 1929 under the aegis of the company's founder, Dr. Ing. Alfons Mauser. In 2004 the mauser brand was completely relaunched by its new parent company, the VAUTH-SAGEL Group. Its portfolio incorporates premium steel products manufactured to familiar mauser quality standards, including the mauser 409 shelving system.



More Efficiency	
With matching mauser 409 System shelving	4
More Clarity	
With mauser SR 409 static shelving	6
More Space	
With mauser RR 409 mobile shelving	8
More Convenience	
With the functions that mauser 409 mobile shelving features ...	10
More Space	
With mauser MR 409 romini compact mobile shelving	12
More Organization	
• in offices	14
• in archive facilities	16
• in libraries	18
• in museums	20
• in retail outlets	22
More Flexibility	
With the mauser 409 System's range of functional accessories ..	24
More Design	
With the design flexibility the mauser 409 System offers	26
More Service	
With the service benefits provided by the mauser 409 System ..	28
More Perspective	
With data and facts about the mauser 409 System	30

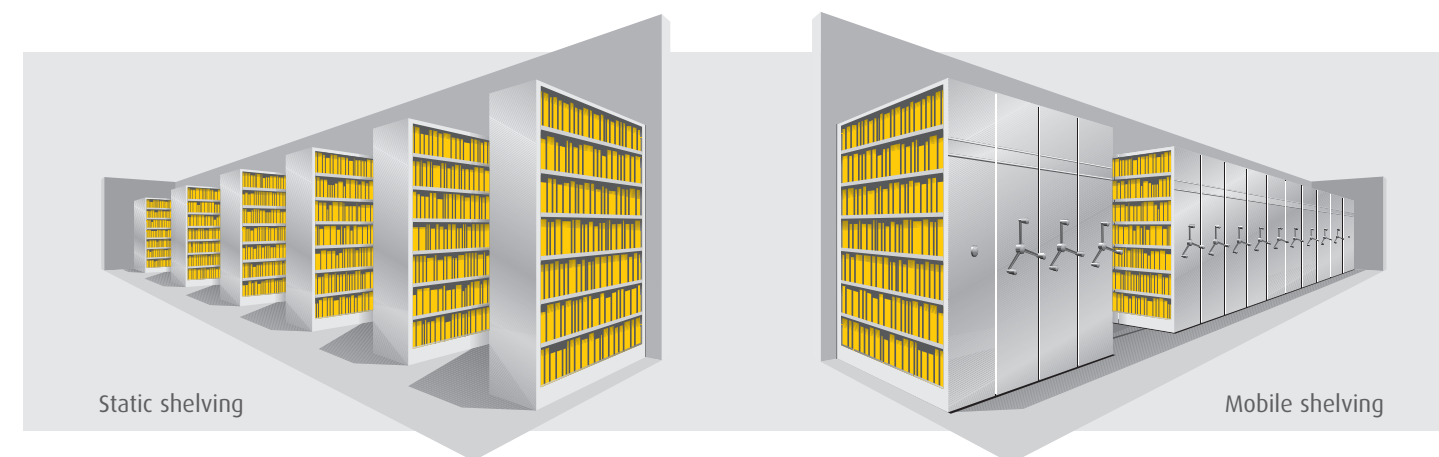
More Efficiency

With matching mauser 409 System shelving

Static or mobile shelving? Which shelving format meets which requirements?

Static shelving makes sense in places where a lot of people simultaneously need to access shelving frequently. The aisles between the static shelving units enable people to get their bearings quickly and provide plenty of space to move. That shortens restock and removal times. Ideal, for example, for order picking in teams.

Mobile shelving is a space-saver. Its mobile shelving units form a shelving block, where only the aisle that is needed at any particular time is open. That saves space and provides almost 100% more storage capacity on the same footprint. Mobile shelving makes sense if a lot of items have to be stored in a limited area and if all the shelving units do not have to be accessed at the same time.



mauser 409. One system – three types of shelving:

1. SR 409 static shelving
2. RR 409 mobile shelving
3. MR 409 romini compact mobile shelving

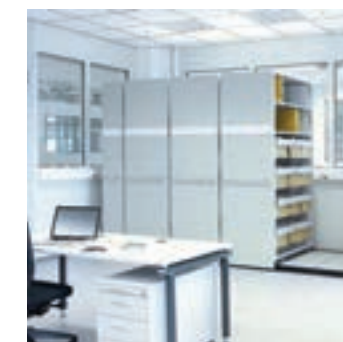
The mauser 409 System is a shared platform for three different shelving formats - SR 409 static shelving, RR 409 mobile shelving and MR 409 romini compact mobile shelving. Given the fact that they are interrelated, one key benefit of the system is cross-format upgradability. Thus for example it is easy to convert static shelving to mobile shelving at a later stage. And even the smallest shelving units can be upgraded step by step over a period of years into large shelving installations.



1. SR 409 static shelving



2. RR 409 mobile shelving



3. MR 409 romini compact mobile shelving

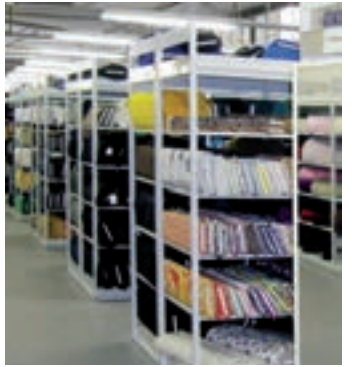


More Clarity

With mauser SR 409 static shelving

SR 409 static shelving. Keeping rapid, across-the-board track.

Regardless of whether it is used in conventional stockrooms, in retail outlets, in archive facilities or in the open-access sections of libraries, SR 409 static shelving enables large numbers of people to rapidly access items of widely different sizes and properties simultaneously. Its high degree of structural stability even allows large quantities of heavy, bulky items to be stored. Its comprehensive range of accessories facilitates installations for every application. A wide range of configuration and colour options enables you to perfectly match its appearance to its environment.



SR 409. Sturdy design with wide aisles for rapid stocking of shelves and plenty of room for removal of items.



SR 409. Everything at a glance.
For example in open-access
sections of libraries.

SR 409 provides practical benefits. Simple structure, flexible configuration.

SR409's simple, double-sided frame design enables entire shelving complexes with clearly-laid-out aisles to be created in next to no time. Featuring a choice of 5 bay widths, 9 shelf depths and 4 shelving unit heights. Its modular design provides plenty of scope for modifications and extensions at a later stage.



SR 409. Special-purpose configurations can be actioned quickly.
For example, featuring glass
shelves and wire-mesh
centre panels.



SR 409. As an office partition,
featuring attractive sliding doors.



More Space

With mauser RR 409 mobile shelving

RR 409 mobile shelving. Get out of the basement! Get into the office!

Where fitted cabinets previously ruled the roost, RR 409 mobile shelving now saves an enormous amount of space at a high level of convenience. For, like a tailor-made suit, its attractive exterior can easily be adapted to match the style of its surroundings. This feature makes it an integral part of any modern, customised office interior concept. And members of staff can look forward to convenient, same-level access, without having to detour to the basement.

RR 409. Fast, centralised access.
Not in the basement, but right
on the office floor.



RR 409. Mobile shelving is still
the No. 1 as far as providing
more capacity in a limited space
is concerned.



Attractive facades, appealing
colours, controls of atemporal
design. Such elegance deserves
admittance to any office.
RR 409 has been at home here
for a long time.

RR 409 mobile shelving. Up to 100 % more storage capacity on the same footprint!

Why rent a second storage facility, if what you have used to date suddenly has double the capacity? RR 409 mobile shelving provides twice the number of shelving units within the same area. Storage capacity is increased by almost 100 %. This often avoids the need to rent additional storage facilities.



RR 409. Space-saving taken to
new dimensions. Here the height
of the room or space is also
utilised. For RR 409 can feature
multi-storey configurations.

Space wasted. Conventional
shelving on 45 m² footprint.



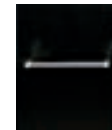
Space gained. RR 409 mobile
shelving on 45 m² footprint.

More Convenience

With the functions that mauser RR 409 mobile shelving features



Star-shaped drive wheel



Handrail



Electric-drive

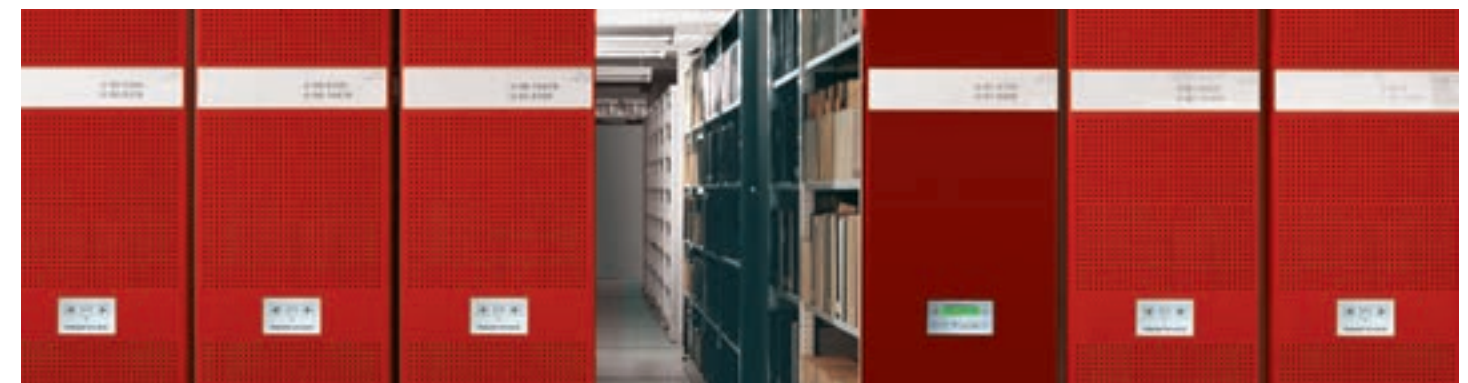
Convenient operation of shelving units. Choice of star-shaped drive wheel, handrail or electric-drive operation.

RR 409 mobile shelving is expert at storing large quantities and heavy weights. Shelving unit lengths ranging from 1 to 12 metres are no problem. Standard star-shaped drive wheels featuring featherlight-touch operation enable you to move shelving units with little effort - you can move up to 4500 kg using just one finger. Smaller shelving systems featuring a maximum weight per shelving unit of 2000 kg can easily be manually operated using a handrail.

For really heavy loads of 5000 kg or more German law stipulates electric-drive operation. Shelving systems can be programmed to open automatically at certain times, e.g. at night, for ventilation purposes. RR simply obtains the required power from a standard household socket.



Option: smart electric-drive system. Featuring soft-start and soft-stop functions, automatic collision guard, automatic safety detail and useful plug-and-play connections between shelving units for future upgrades.



Lockable mobile shelving provides effective protection for precious items.

Convenient level of protection for stored items. "En bloc" lockability of shelving configurations.

If you push the shelving units together "en bloc", this protects stored items from the impact of dust and light. Perforated side panels provide sufficient ventilation. Optional central locking guards against unauthorised access. Also available as an optional extra: electric-drive operation with programmable ventilation settings and automatic park positions.



Optional shelving block close-off: the last shelving unit in a block can be a half-unit, also featuring central locking. Therefore the final shelving unit can only be accessed "from within" and is lockable. A sliding door on the outside is not required.



RR 409. Central locking to create a closed, "impregnable" block.



More Space

With mauser MR 409 romini compact mobile shelving

MR 409 romini mobile shelving. Compact, space-saving and featuring a "front-of-house" look.

MR 409 romini is mobile shelving in mini-format, designed for use in locations with restricted space, for example in offices or retail outlets, where renting separate archive or storage facilities is either uneconomic or unfeasible. In these situations the mini "space sensation", romini, gets the job done on just half the footprint, compared with static shelving at the same volume of storage space.

Thanks to its compact and agreeably atemporal design, romini conveys a streamlined, elegant impression, like a piece of furniture. That is why it is very popular as a partition.



Given its compact design, MR 409 romini can be positioned right next to workstations or in the centre of any office suite. That saves time and long detours to faraway basement archives.



Just take it with you when you relocate! MR 409 romini is fully portable.

You can take your entire MR 409 romini installation with you when you relocate. The reason for this is that its nonbraced slide pedestal, which rests on the floor, is simply dismantled and removed – just like every other shelving component.

Simple installation facilitates rapid relocation.



A solid base is provided by the 50mm-thick steel pedestal frame guide rails, which is bolted together "on site" and laid on the floor.



Instead of in-floor tracking: floor pedestal with non-slip covering. This means that romini is always portable and carpets remain undamaged.



More Organization in Offices

Reference: John Deere Mannheim

**Maximum filing efficiency on all floors.
Achieved using mauser 409 mobile shelving.**



Conventional binder shelves,
lateral filing, magazine files
– RR 409 caters for all required
filing formats at John Deere.

The John Deere Plant in Mannheim is Deere & Company's second largest factory throughout the world and its largest production facility outside the USA. 2,700 employees manufacture Europe's most modern tractors here. Mannheim is also where the Deere & Company European Office is based. Here mauser 409 mobile shelving ensures maximum filing and archiving efficiency. To streamline procedures it is not only used in basements but also in open-plan offices and in archive areas adjacent to offices on the same floor.



John Deere Plant, Mannheim.



Large-scale RR 409 mobile shelving. Close to the offices, in the archive facility on the 3rd floor.



The 409 System allows for a range of different shelving unit heights within a closed shelving installation.
So not one millimetre of storage space is wasted, as seen here in the basement.

**Double the storage capacity.
Achieved using mauser 409 mobile shelving.**

John Deere systematically stores all its documents on a needs-driven basis. Whilst binders and folders that need to be accessed quickly are housed in compact format in the office or in the adjoining archive facility, low-frequency-access files are stored in the basement. mauser 409 mobile shelving is in use throughout. It provides almost twice the storage capacity on the same footprint, compared with static shelving.

It's just a couple of steps from workstation to MR 409 romini compact mobile shelving.



Space-saving and "easy on the eye" too: MR 409 romini compact mobile shelving. Seen here as a central archive pool in the middle of an open-plan office. romini features central locking for "en bloc" security.



More Organization in Archive Facilities

Reference: Brandenburgisches Landeshauptarchiv Potsdam

Historical long-term memory. Stored on mauser shelving.



Map/flat file cabinets in space-saving mobile shelving format. Steel drawers can accommodate items up to A0 size. Rolled-up documents can be stored in the open compartments above.

All government agencies and courts in the State of Brandenburg are obliged to forward the documents they no longer require, e.g. files, certificates and maps, to the Landeshauptarchiv (Main State Archive). The remit of the Landeshauptarchiv is to safeguard this information long-term, in order to preserve both the State's cultural heritage and historical long-term memory.

mauser 409 System shelving is used for this purpose both at the main office in Golm and at the repository building in Bornim.



Brandenburgisches Landeshauptarchiv in Potsdam.



Rolled-up plans in SR 409 static shelving. A range of different bay heights facilitates optimum use of room height, despite "obstacles" on the ceiling.



Optimum match to archive items. SR 409 static and RR 409 mobile shelving.



Practical solution: special drawers with certificate compartments. The perforated fronts provide ventilation.

Variability and flexibility are the strengths of the 409 System. Each category of archive items is stored according to shape and properties in special-purpose shelving compartments, fitted with shelves or drawers. Each archive section is colour-coded for fast identification. The colour of the perforated side panels matches the colour accentuation on the ceiling exactly.

Almost 148,000 archive boxes in storage space of around 13,000 linear metres. Stored compactly and clearly arranged in RR 409 mobile shelving.

Archive sections with their own colours. Here shelving front panels and ceiling components have the same colour.



Certificates and files stored in RR 409 mobile shelving. Pull-out shelves make checking documents easier.

More Organization in Libraries

Reference: Central Medical Library at the
University Clinic, Hamburg-Eppendorf

**SR 409 and RR 409 in the repository.
Featuring a valuable portfolio from down the ages.**



Historical works. The oldest book
dates from 1798. The oldest
journal is dated 1844.

The Central Medical Library at the University Clinic, Hamburg-Eppendorf provides specialist medical literature to 3,600 students as well as to scientific, care and administrative staff and to interested members of the public. 300,000 books, more than 3,000 e-journals and in excess of 5,000 e-books are provided, spread over 7 floors. Both basements house the extensive repository covering a total area of 835 m². This is where books dating back through the ages are stored. mauser 409 System shelving provides convenient access to this valuable portfolio.



The Central Medical Library at
the University Clinic, Hamburg-
Eppendorf.



One of the benefits of the mauser
409 System: uninterrupted, flush
joints between uprights and shelves
avoid damage to valuable book
covers.



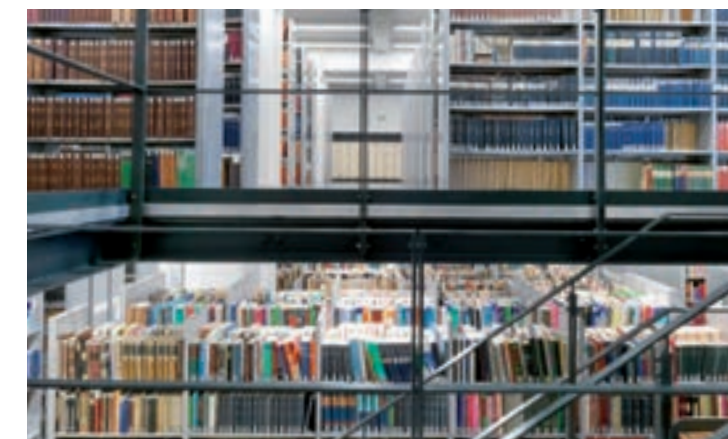
SR 409 static open-access
shelving. Wide aisles,
rapid orientation.

**Two repository floors. The 409 System features twice:
SR 409 static and RR 409 mobile shelving.**

Like a library within a library: the repository, featuring an open-access
section on the upper level. SR 409 open-access shelving is located
here. Beneath that is the conventional repository level housing space-
saving RR 409 mobile shelving only.



Two-storey design.
Above: mauser SR 409 static
shelving with wide aisles,
as in the open-access section.
Below: space-saving mauser
RR 409 mobile shelving.



RR 409 mobile shelving. Here
only one aisle is open at any
one time. That provides up to
100% more storage capacity.

More Organization in Museums

Reference: Übersee-Museum, Bremen

The practical museum combination: SR 409 static combined with RR 409 mobile shelving.



Exhibits that can be kept “in the open” are stored on SR 409 static shelving. A guardrail prevents ‘movable’ Items from falling off shelves.

The Übersee-Museum in Bremen combines natural history, ethnological and history-of-commerce collections under one roof. The exhibitions take visitors on a journey from Oceania via Asia and Africa to Latin America.

To spice up the exhibition areas at regular intervals, the Museum keeps extensive collections in stock, safely stored on mauser’s SR 409 static and RR 409 mobile shelving.



Übersee-Museum Bremen.



RR 409 mobile shelving provides protection against dust and the negative impact of light. Space-saving effect: only the aisle you want to access is opened.



Customised for the Museum: SR 409 static and RR 409 mobile shelving.



560,000 rare insects. Securely stored in mauser’s space-saving RR 409 mobile shelving.

The mauser shelving at the Übersee-Museum Bremen has been customised to meet the requirements of everyday museum routines. For example custom-made drawers and brackets for the insect collection, extra-large compartments for mammal specimens or special wire-mesh inserts for bows, spears and shields in the Ethnology repository.

Thematically linked items can be stored together, despite differences in size. The heights of the compartments are variable. Integrated drawers can accommodate filigree items.

Every butterfly is valued at up to 3,000 Euros. To ensure safe storage the blocks of wooden drawers plus contents were integrated into the mobile shelving.



Bulky rarities are stored, suspended on wire-mesh insert panels in RR 409 mobile shelving.



More Organization in Retail Outlets

Reference: PUMA Factory Outlet Center, Herzogenaurach



PUMA Factory Outlet Center.

Transparency and stability.
Provided by SR 409.



PUMA warehouse. The transparency and stability provided by SR 409 shelving facilitates fast order-picking.

PUMA is one of the world's leading sport & lifestyle companies that designs and develops footwear, clothing and accessories. The world's largest PUMA Outlet is in Herzogenaurach, which is also where the company's German corporate headquarters are located. People can shop till they drop in a retail area covering a total of 2,300 m².

The adjoining warehouse covers an area of 1,400 m², stocking around 70,000 footwear, clothing and accessories items. SR 409 static shelving in a range of different finishes and configurations is used here. Just like in many other PUMA warehouses around Europe, where mauser has now installed its 409 System.



Clothing is stored on hangers in the re-sort section.



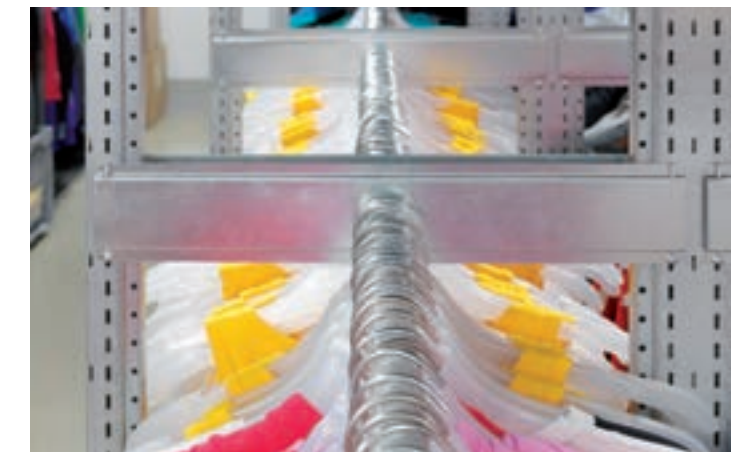
High degree of flexibility.
The 409 System adapts perfectly.

SR 409 static shelving. The heights of the compartments can be adapted to suit.



Spatial efficiency: shelving bays with non-standard heights allow every last millimetre up to the ventilation shaft to be utilized.

Goods stocked flat or on hangers, boxes or foil wrapping. The system provides the appropriate shelving for every application and for every packaging format. mauser 409 shelving is also flexible enough to adapt to structural givens. Its modular design allows for plenty of variance from standard conventional solutions.



To complement the static shelving in Herzogenaurach, PUMA utilizes mauser RR 409 mobile shelving in the warehouse of its Berlin shop. Because every square metre saved counts.

Stability: the clothing rails are attached to sturdy shelving depth bars.



More Flexibility

With the mauser 409 System's range of functional accessories

Variable range of functional accessories.
For every version of the mauser 409 System.

Regardless of whether it is static, mobile or mini-mobile shelving that is required, the functional accessories provided fit all versions of the 409 System. This is because all components are modular. That is a benefit, if you want to convert static into mobile shelving, for example. Or if both static and mobile shelving are used in one location.

Wide range of solutions.
For many different applications.

Retail outlets require front-of-house-look shelving. Conventional archive facilities require accessory solutions that can be added to over a period of years. And offices need the flexibility to be able to switch over to different filing formats fast. The 409 System's comprehensive range of accessories delivers all this and more.

Perfect combination: binder and suspension filing. Any filing format can be combined with any other within a single shelving unit.



Vertical or lateral: suspension filing configuration.



Provides perfect purchase: shelf divider with slide-trim.



Matches Leitz, Elba, Zippel systems: accessories for pendulum folders.



Transform shelving into cabinets: sliding or double doors.



For flat-storage files: thread-through wire rod dividers.



Ideal for consumables: drawers with dividers.



Front-of-house-compatible: special glass shelves.



Practical shop solution: fittings for clothing.



With the design flexibility the mauser 409 System offers

Noise reduction combined with design-detail perforations. Using sound-insulation-efficient front panels.

The mauser 409 System's optional sound-insulation-efficient front panels both appeal to the eyes and go easy on the ears.

Ideal, for example, for mobile shelving, positioned in or close to office areas. Here the perforation pattern is also a design feature.



Low-key yet elegant: sound-insulation-efficient front panels in an office environment. Also easy on the eye: the smart, fine-pore-perforation design detail.

Compared with wood, steel can feature considerably finer perforations. Therefore sound-insulation-efficient steel front panels can absorb palpably more sound.



Aesthetic appeal for interiors ranging from offices to storage facilities. Featuring a wide choice of design options.

The design of the 409 System also appeals. A lot of this appeal is down to its attractive front panels, which add a degree of design creativity to the shelving. The choice ranges from striking perforated sheet steel via wood laminate and stainless steel design through to custom-painted finishes. Sticking custom photo motifs onto panels is also an easy service to provide.



Front panels are available in a choice of attractive perforated sheet steel, laminate or premium veneer finishes, depending on taste and interior design concept.



For the avant-garde: exceptional finishes such as the new stainless-steel look. A completely new lamination method makes this feasible.

Each storage section can be allocated its own colour.



More Service

With the service benefits the mauser 409 System offers

Advice, planning and installation. mauser's specialists deal with everything.

Upon request the mauser Service Team can handle the entire interior furnishing process – from planning through to professional installation of shelving units and systems. This ensures efficiency, adherence to deadlines and compliance with current guidelines/regulations.

Architects and planning firms also benefit from our level of service. We are able to produce detailed specifications, implementation plans and relocation concepts upon request.



Which type of shelving matches which application? How can maximum possible cost-effectiveness be achieved? Which non-standard solutions are feasible? The mauser Team deals with all these issues in detail.



**MADE
IN
GERMANY**

**Quality is guaranteed.
Audited annually – “on site” at clients’ premises.**

Obligatory for the mauser 409 shelving system: GS-certification and the RAL seal of audited “Made in Germany” quality”.

Audited “Made in Germany” quality -documented many times over and incorporated throughout the portfolio right down to the last accessory. mauser guarantees permanent quality, longevity and safety. German and European law stipulates regular inspection of shelving, to be conducted every 12 months. mauser is also pleased to provide approved inspectors to help clients comply with the regulations that apply in their markets.



Freight paid



Optional:
Unloading,
Installation



10-year*
guarantee

The 409 System service package also includes freight-paid delivery, unloading/on-site handling and installation plus a 10-year* guarantee!

* does not apply to electric-drive operation

mauser is certified to
DIN EN ISO 9001 and
according to EN ISO 14001.



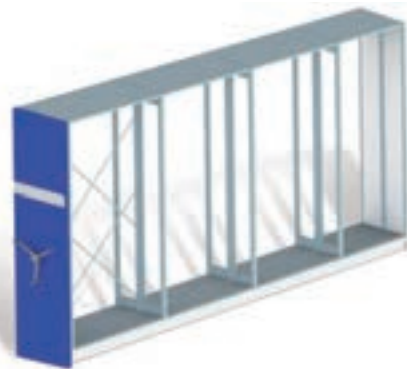
Long-term safety is ensured by annual inspections of shelving in accordance with industrial health and safety regulations and the European EN 15635 standard. Approved mauser inspectors can handle this for clients.



More Perspective

With mauser 409 System technical specifications

As simple as it is flexible: the shared design engineering principle of SR 409, RR 409 and MR 409 shelving. Perfect for simple retro-fitting, extending or supplementing your shelving.



SR 409 static shelving.
The fixed-position shelving all-rounder.

SR 409	Maximum bay loads	Shelving widths	Usable bay widths	Shelving heights	Compartment depths Single-/double sided	Required floor finish
Applications include libraries, museums, order-picking stores, goods stores, map/file/brochure storerooms.	600 kg – light 1000 kg – heavy-duty	Starting at 816 mm	740 mm	1900 mm	200/400 mm	Ready-to-use floor.
			870 mm	2200 mm	220/440 mm	
	1000 mm	2500 mm	250/500 mm			
	1130 mm	2850 mm	300/600 mm			
	1260 mm		350/700 mm			
			400/800 mm			
		Non-standard heights upon request	450/900 mm			
			500/1000 mm			
			600/1200 mm			

RR 409 mobile shelving.
The all-purpose space-saver.

RR 409	Maximum bay loads	Shelving widths	Usable bay widths	Shelving heights (upright heights)	Compartment depths Single-/double sided	Required floor finish
Applications include libraries, museums, filing rooms, office suites, goods stores, brochure storerooms.	350 kg – superlight	from 1252 mm to 9426 mm	740 mm	2065 mm (1900)	–/500 mm	Bare concrete, incl. underlayment.
	600 kg – light	Other shelving widths upon request	870 mm	2365 mm (2200)	300/600 mm	
	1000 kg – heavy-duty		1000 mm	2665 mm (2500)	350/700 mm	Tracking on ready-to-use floor.
			1130 mm	3015 mm (2850)	400/800 mm	
			1260 mm		450/900 mm	
			Other bay widths upon request	Non-standard heights upon request	500/1000 mm	Wood pedestal.
					600/1200 mm	

MR 409 romini compact mobile shelving.
The compact “space sensation”.

MR 409 romini	Maximum bay loads	Shelving widths	Usable bay widths	Shelving heights (upright heights)	Compartment depths Single-/double sided	Required floor finish
Applications include open-plan offices, brochure storerooms, shops.	600 kg – light	1026 mm	870 mm	1200 mm (1100)	300/600 mm	Ready-to-use floor.
		1286 mm	1130 mm	2000 mm (1900)	350/700 mm	
				2300 mm (2200)	400/800 mm	

mauser's elegant move mobile shelving system.

Featuring obvious office interior benefits.

- ✓ Designed specifically for office applications
- ✓ Major space gains of almost 100%
- ✓ Elegant "front-of-house" design
- ✓ Can be custom-matched to any interiors concept
- ✓ Wide range of size and finish options
- ✓ Specific office functions with high degree of convenience
- ✓ Cost-reducing economisation on space
- ✓ Rapid access, no long detours
- ✓ Practical protection against impact of dust and light
- ✓ Comprehensive security provided by optional "en bloc" locking
- ✓ Optional sound-absorbing front panels
- ✓ Visual appeal provided by attractive laminate finishes
- ✓ Convenient handling provided by effortless drive systems