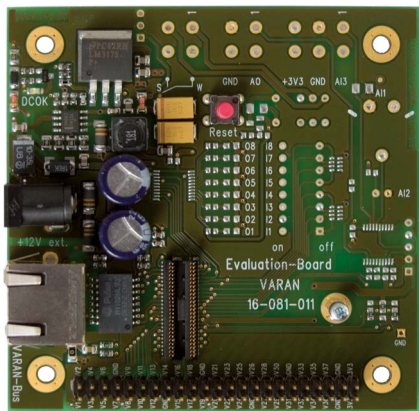


VARAN Demo Board

VEB 022



The VARAN VEB 022 demo board provides VARAN users and sensor/actuator manufactures with simple hardware so that they can implement this bus system in their products quickly and easily.

The respective VEB 011 or VEB 022 client board is simply connected to the demo board and the VARAN bus to the RJ45 socket.

Unlike the VEB 021, the VEB 022 is a less populated demo board. The DPRAM mode is defined for this board by default. External hardware can be connected over the connector strip.

Mechanical Dimensions		
Circuit board	85.0 x 85.0 mm	
Mounting hole clearance	69.00 mm horizontal and vertical	
Diameter of mounting holes	3.5 mm	

Electrical Requirements

Supply voltage	10-30 V DC	
Voltage from external supply	+12 V for internal supply (optional)	
Voltage supply from C-DIAS bus	+24 V for internal supplies	
Current consumption of VARAN bus (+24 V supply)	typically 90 mA	maximum 110 mA
If the +24 V supply is not set over the VARAN bus, an external +12 V power supply must be connected to plug X2!		
Current consumption of the external supply (+12 V supply)	typically 150 mA	maximum 200 mA
Status display	LED	
+3V3 for external applications (connectable by a strip)	maximum 50 mA	

Article Number and Miscellaneous

Article number	16-081-022
Applicable power supply 12 V DC	16-081-022-Z1
Hardware version	1.x
Preset mode (Mode pins)	010 DPRAM mode
LASAL class	veb022