

Off-cut Remover HEKTOR 2



Hektor separates milled PCBs carefully and fast. The off-cut material is removed smoothly and precisely. The matrix consists of two parts. This ensures easy and cost-saving change of the blades. Compressed air is used for the separation process. The operating pressure can be set on the machine. When the foot switch is pressed, the off-cut is punched out. The off-cuts are collected in the collecting box. When the gate is opened the waste material can be extracted.

Safe Operation

The PCB is slipped with its milled groove over the blade and is placed onto the matrix. The off-cut is pulled under the blade. When the foot switch is pressed, the off-cut is punched out and the waste material is collected inside the machine.

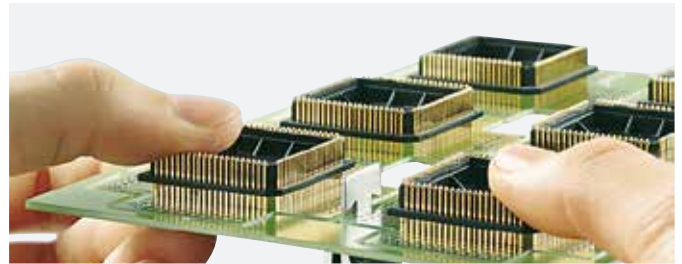
Technical Data

Separation type		Punch blade
Operation		by hand
PCB thickness		max. 2.5 mm
Air connection		1/4"-plug-in coupler
Operating pressure		typical 4 bar
Temperature/	Operation	+ 5 - 40°C / 10 - 85%
Humidity	Storage	+ 0 - 60°C / 20 - 80%
not condensing	Transport	- 25 - 60°C / 20 - 80%
Weight		2.7 kg
Dimensions H x D x W		170 x 255 x 220 mm
Approvals		CE, FCC class A

Part No.

Description

8932145	Off-cut Remover Hektor 2 (bur for blade)
8932xxx	Blade separate to order
Content of delivery	Off-cut Remover with air pressure regulator Foot switch Hexagon key 2 mm Hexagon key 4 mm Operation manual d/e



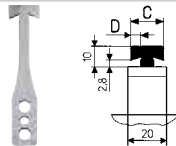
Blades

To ensure the blade will not be jammed in the PCB, the milled groove should be at least 0.15 mm wider as the blade.

Part No.		A	B	C	D	E	F	G
8932137.001	Balde 1.5 T	≥1.5	1.35	17.2	4.7	>19.0	>19.0	3.0
8932138.001	Balde 2.0 T	≥2.0	1.85	17.2	5.2	>19.0	>19.0	3.0
8932191.001	Balde 2.4 T	≥2.4	2.25	18.0	5.7	>19.0	>19.0	3.0
8932139.001	Balde 2.5 T	≥2.5	2.35	18.0	5.7	>19.0	>19.0	3.0
8932144.001	Balde 3.0 T	≥3.0	2.85	18.0	5.7	>19.0	>19.0	2.5
8932122.001	Balde 1.5 L	≥1.5	1.35	12.0	4.7	>15.0	>13.0	3.0
8932123.001	Balde 2.0 L	≥2.0	1.85	12.0	5.2	>15.0	>13.0	3.0
8932141.001	Balde 2.4 L	≥2.4	2.25	12.0	5.7	>15.0	>13.0	3.0
8932124.001	Balde 2.5 L	≥2.5	2.35	12.0	5.7	>15.0	>13.0	3.0
8932125.001	Balde 3.0 L	≥3.0	2.85	12.0	5.7	>15.0	>13.0	2.5
8932171.001	Matrix (as spare part)							

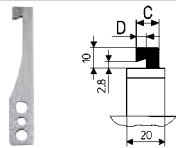
T-Blade

With the T-blade off-cuts can be punched out right and left of the blade without turning the PCB.



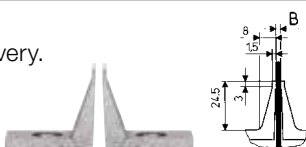
L-Blade

The L-blade will be used if there are small distances between the off-cuts

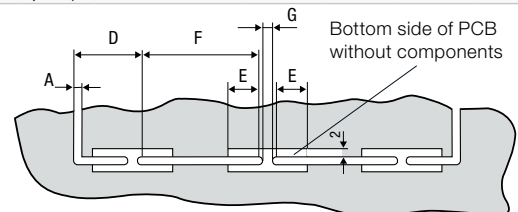


Matrix

Included in delivery.



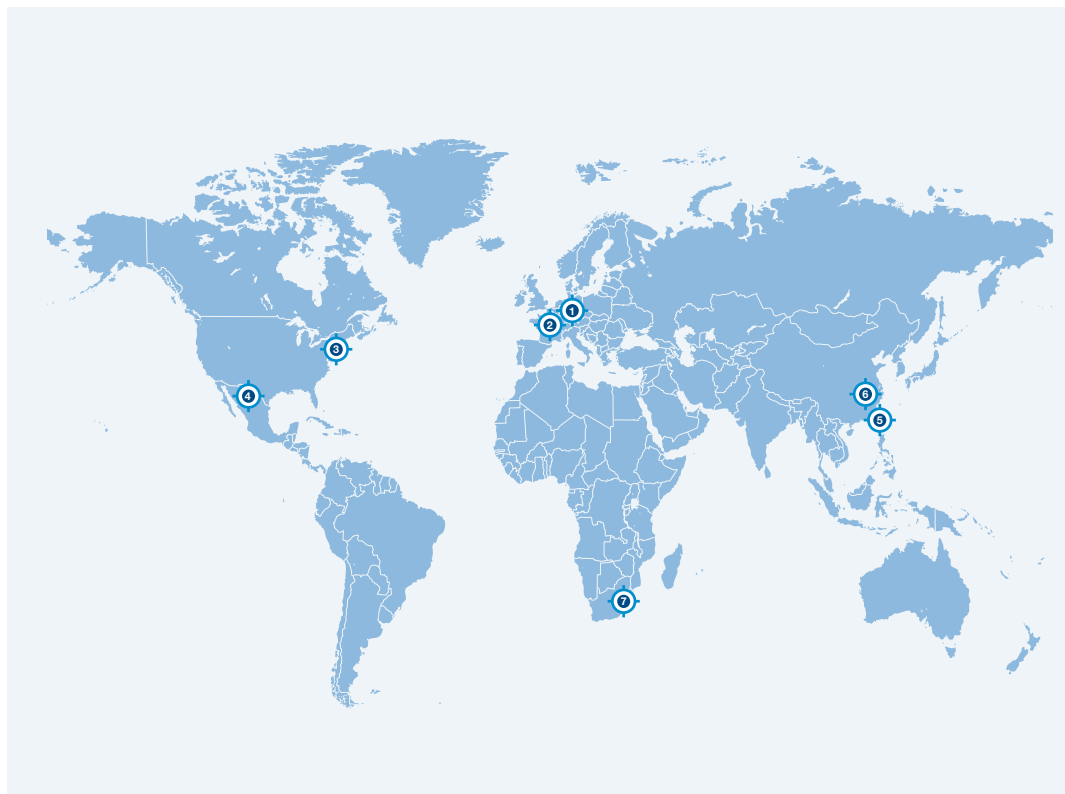
Blades with varying thickness on request.



① Headquarter and fabrication
in Germany

② to ⑩ International
subsidiaries

There are furthermore 820
distribution partners in more
than 80 countries.



Europe

Germany

cab Produkttechnik
GmbH & Co KG
Wilhelm-Schickard-Str. 14
76131 Karlsruhe
phone +49 721 6626 0
fax +49 721 6626 129
info@cab.de
www.cab.de

France

cab Technologies S.à.r.l.
2a Rue de la Moder
Z.A. Nord du Val de Moder
67350 Niedermodern
phone +33 388 722501
fax +33 388 722502
info.fr@cab.de
www.cab.de/fr

America

USA

cab Technology, Inc.
87 Progress Avenue Unit 1
Tyngsboro, MA 01879
phone +1 978 649 0293
fax +1 978 649 0294
info.us@cab.de
www.cab.de/us

Latin America

Alejandro Balmaceda
Hacienda Jurica Pte 1615
Colonial de Valle
32553 Juárez, Mexico
phone +52 656 682 4301
a.balmaceda@cab.de
www.cab.de/es

Asia

Taiwan

cab Technology Co., Ltd.
希愛比科技股份有限公司
16F-1, No. 700, Jhong Jheng Rd
Junghe, Taipei 23552
phone +886 (02) 8227 3966
fax +886 (02) 8227 3566
info.asia@cab.de
www.cab.de/tw

China

cab (Shanghai) Trading Co., Ltd.
铠博(上海)贸易有限公司
A507, No. 268, Tong Xie Rd
Shanghai 200335
phone +86 (021) 6236 3161
fax +86 (021) 6236 3162
info.cn@cab.de
www.cab.de/cn

cab (Shanghai) Trading Co., Ltd.
铠博(上海)贸易有限公司
Room 39, 10F, 8 Lin He Zhong Rd
Tian He District, Guangzhou 510610
phone +86 (020) 2831 7358
info.cn@cab.de
www.cab.de/cn

Africa

South Africa

cab Technology (Pty) Ltd.
14 Republic Street
Bordeaux
2125 Randburg
phone +27 11 886 3580
fax +27 11 789 3913
info.za@cab.de
www.cab.de/za