

RT *e-motion*

Electromechanic Tombstone
with integrated drives

PROGRAMMABLE MOTION PROFILES

Clamping of every workpiece geometry
I.D. and O.D. clamping

ENERGY EFFICIENT

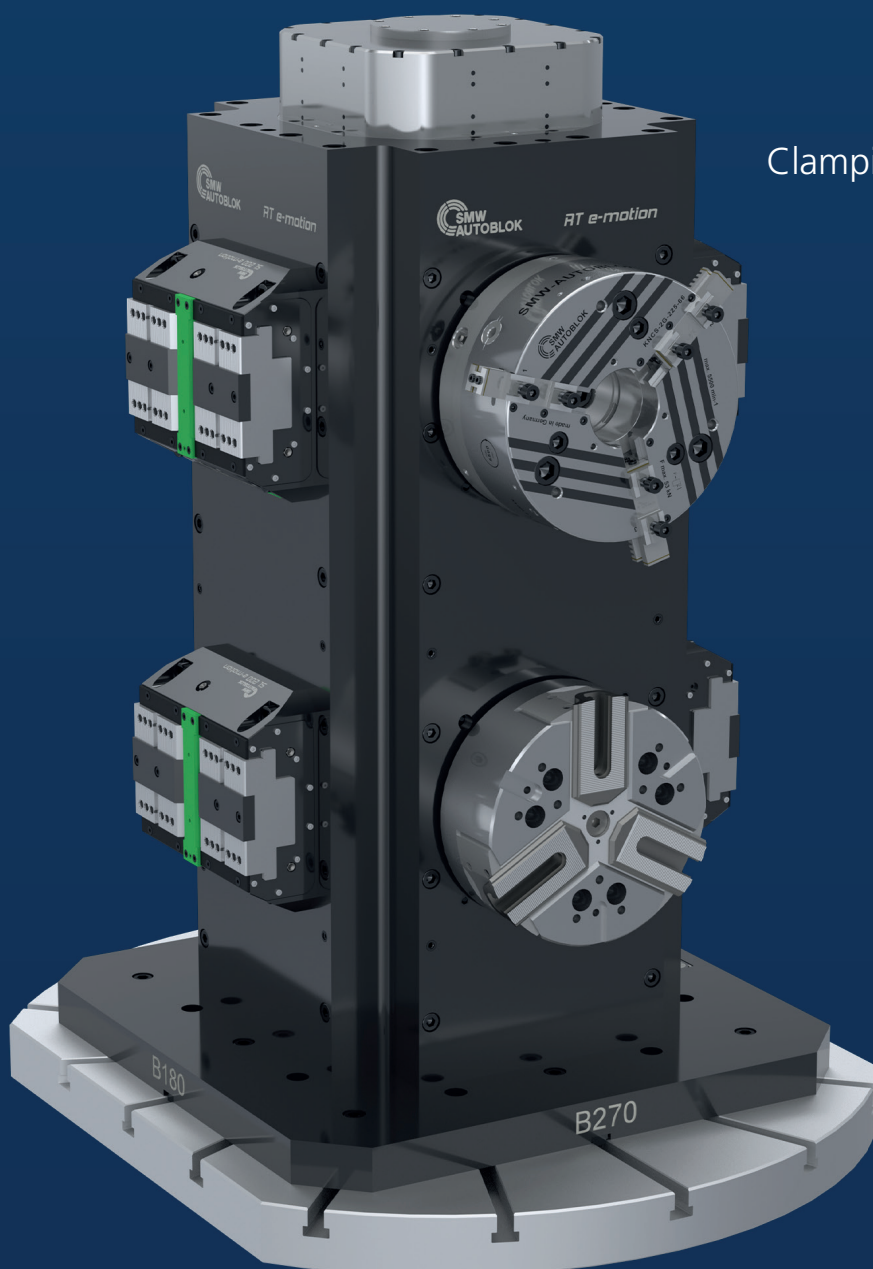
Power consumption only
while actuating the chuck

SENSITIVE CLAMPING

Changing of the
clamping force without
actuating the chuck

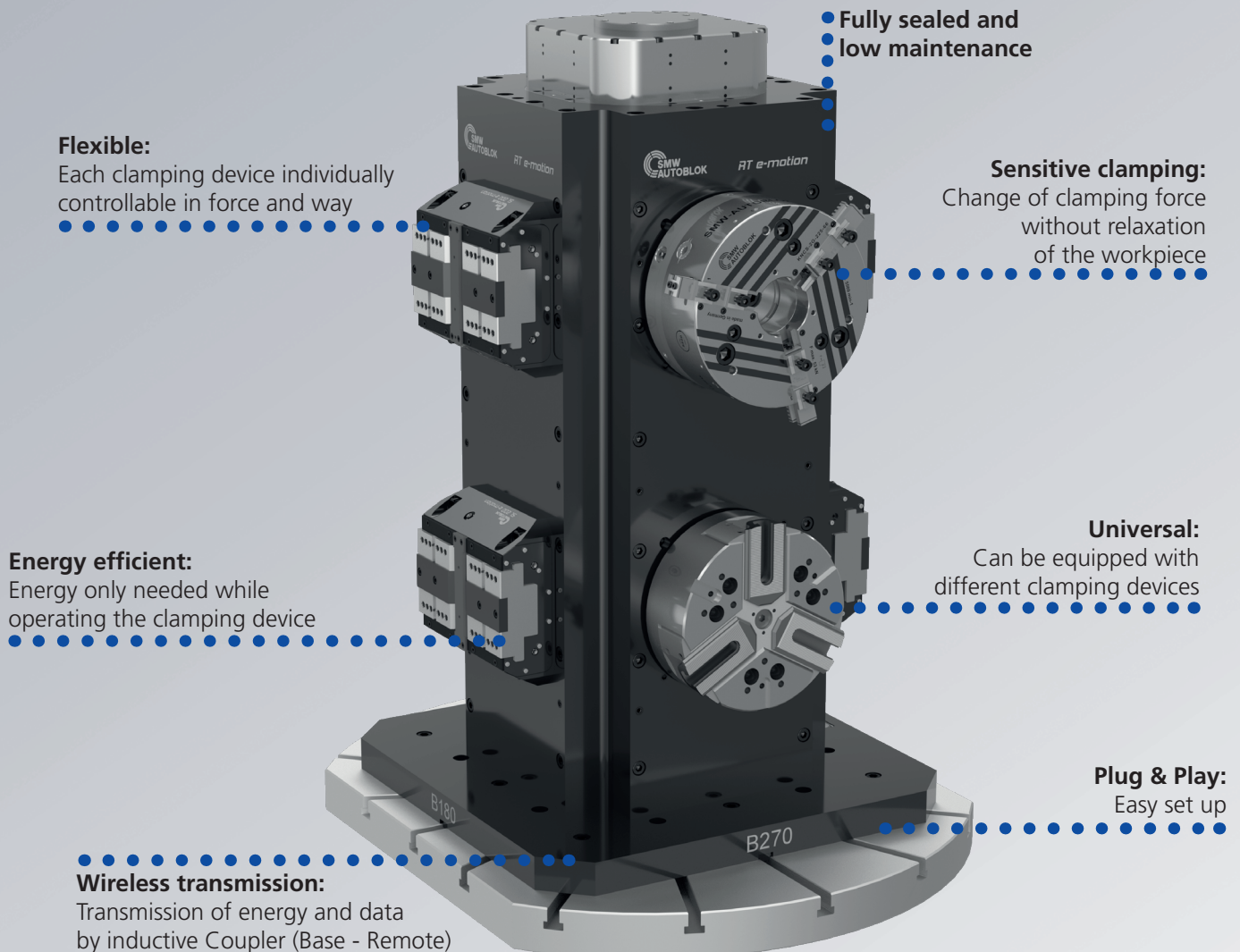
PLUG+PLAY

Easy setup



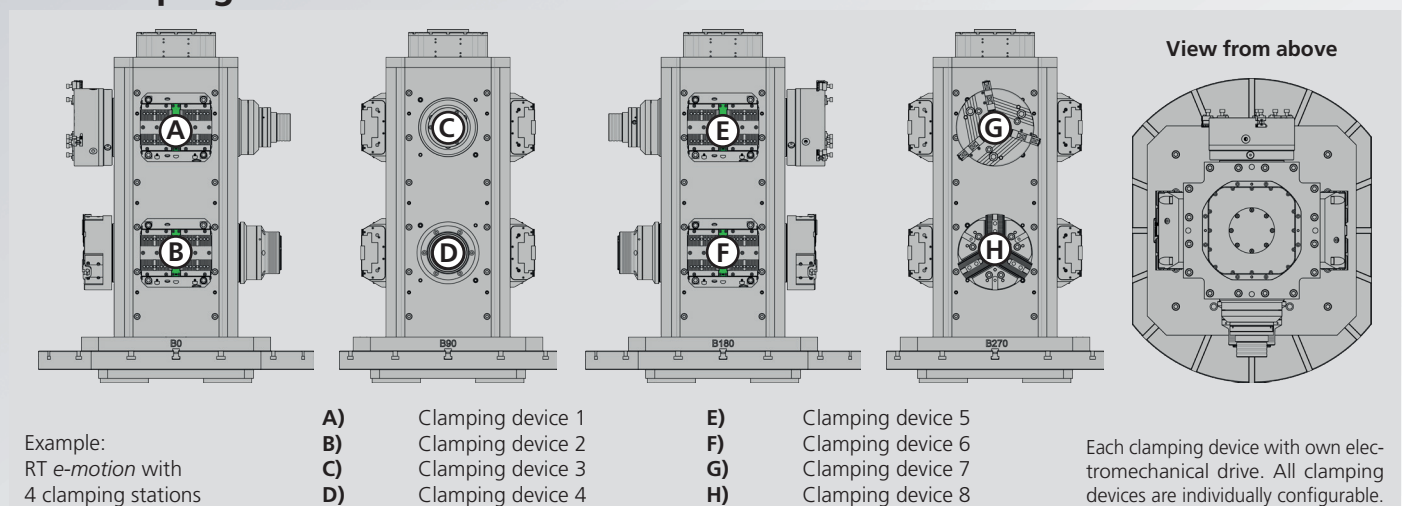
RT *e-motion*

Electromechanical Tombstone with 8 integrated drives



Arrangement of tension drives

Per clamping station - one electromechanical drive



Clamping glossary

Individual control: The RT *e-motion* tombstone has **several clamping stations**. This allows the placement of different clamping devices which are actuated by an **axial clamping stroke**.

In addition, the separately placed drives for each clamping station allow a **separated approach of each clamping device in force and way**.

Sealing: The tension drives of the RT *e-motion* tombstone are fully sealed and **protected against the ingress of dirt and coolant**. This prevents inaccuracies and malfunctions and makes the system exceptionally safe to operate and low maintenance.

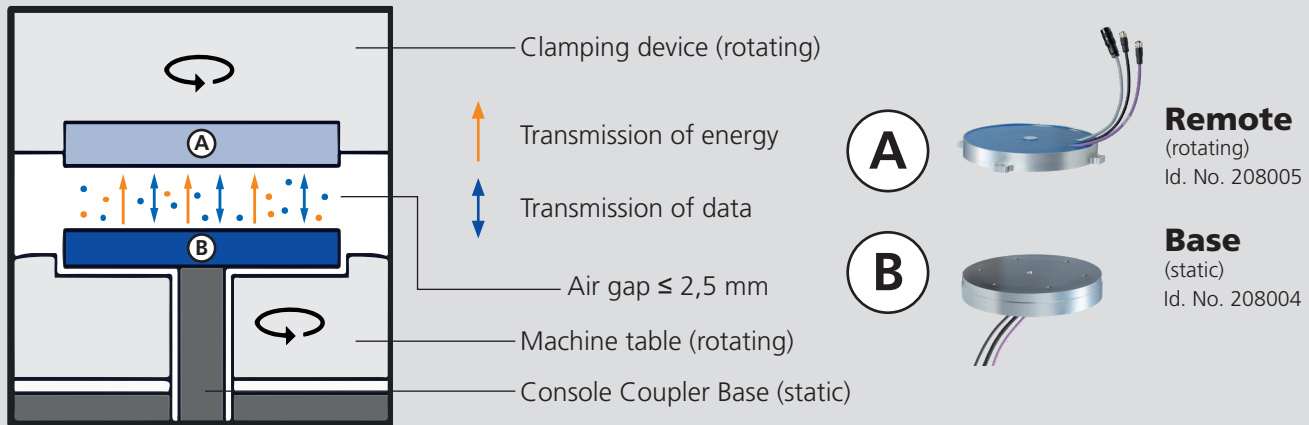
Sensitive clamping: The individual drives are **separately programmable** via the controller. This has the advantage that e.g. in a complete machining, matching the clamping process (rough machining, smoothing etc.), the **required clamping force is infinitely variable**.

Exchange connectivity: Simple and fast exchange of all SMW *e-motion* products with the same Coupler system.

Wireless transmission: The contactless / inductive Coupler system ensures the complete energy supply. It also transmits all sensor data - This ensures a **secure (without cable), fast data exchange in real time** between machine control and clamping device / tombstone.

Function of the inductive coupler

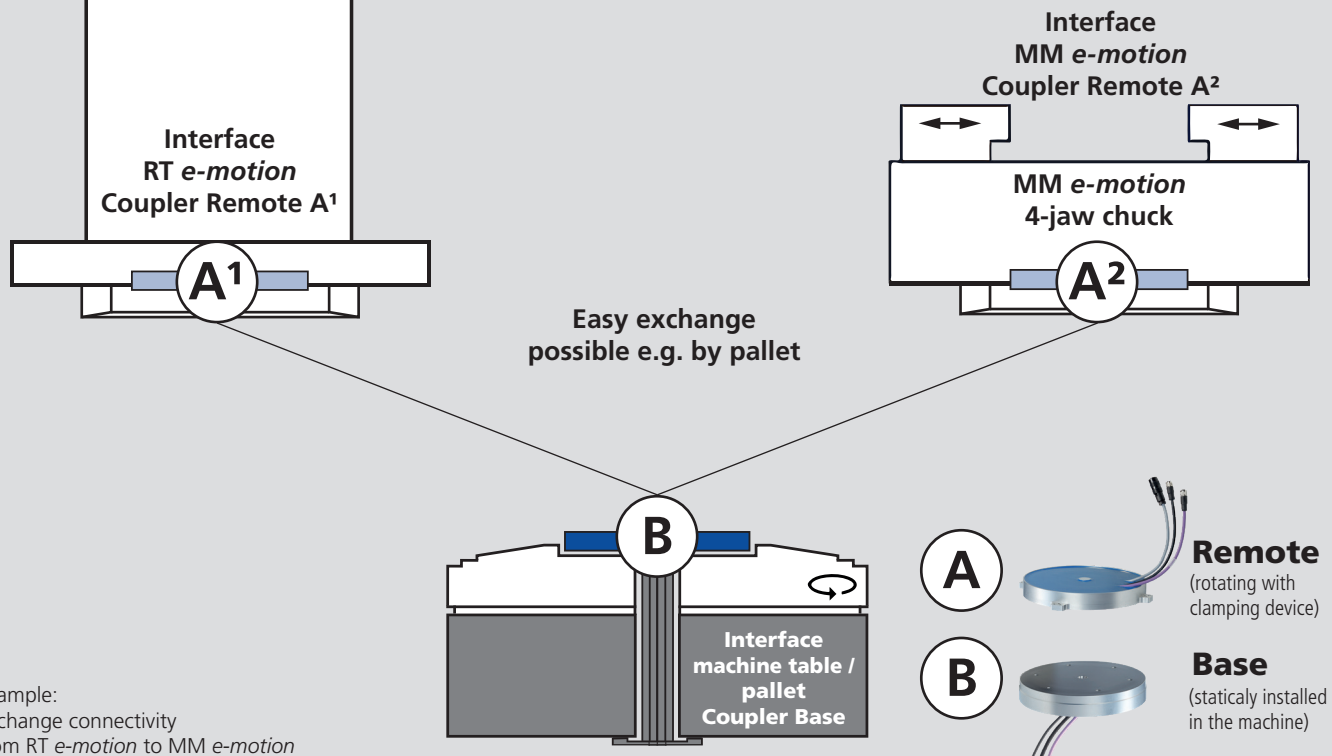
Inductive transmission of energy and data



Exchange connectivity

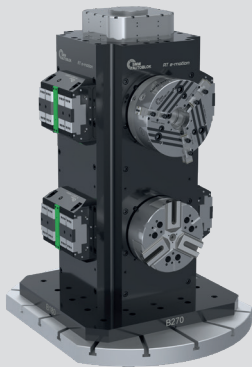
Exchange between SMW-AUTOBLOK *e-motion* model series possible

All products of the SMW-AUTOBLOK *e-motion* model series are based on the same Inductive Coupler platform. A Base Coupler firmly installed in the machine can connect wirelessly to any Remote Coupler on a SMW-AUTOBLOK *e-motion* clamping device.



Example:
Exchange connectivity
from RT *e-motion* to MM *e-motion*

- Each clamping device can be controlled individually
- Wireless transmission of energy and data



Application/customer benefits

- Each clamping device can be controlled individually
- Wireless transmission of energy and data via inductive Coupler system
- Clamping stations can be equipped individually
- Permanent monitoring of the clamping force and clamping positions
- Various strokes and forces individually programmable
- Plug & Play

Technical data

- Sensitive clamping / change of the clamping force without unclamping the workpiece
- Fully sealed – low maintenance
- Max. operating force for each clamping device 35 kN
- Axial stroke for each clamping device 21 mm

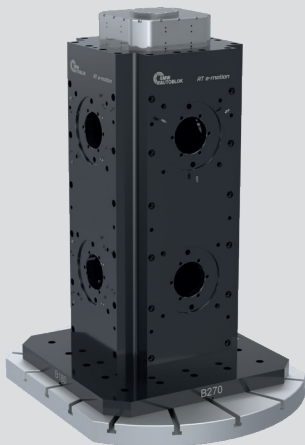
Standard equipment

RT e-motion tombstone incl. electromechanical drives without clamping device

Occupancy options of the clamping stations

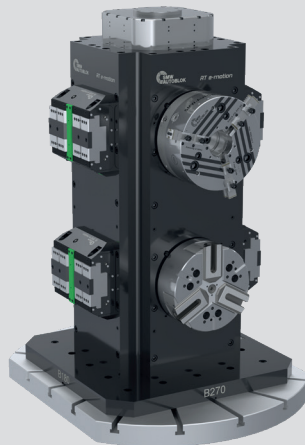
RT e-motion:

Display of tombstone incl. electromechanical drives without clamping devices, assignment of individual clamping devices.



RT e-motion with clamping devices:

Display of RT e-motion incl. electromechanical drives with clamping devices.



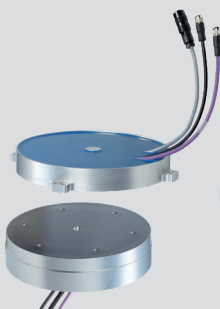
Different clamping devices RT e-motion:

- Power vices
- Power chucks
- Pull-down chucks
- Compensating chucks
- Quick jaw change power chucks
- 6-jaw chucks
- Collet chucks
- Grippers
- Mandrels

Order review / Plug & Play



RT e-motion tombstone



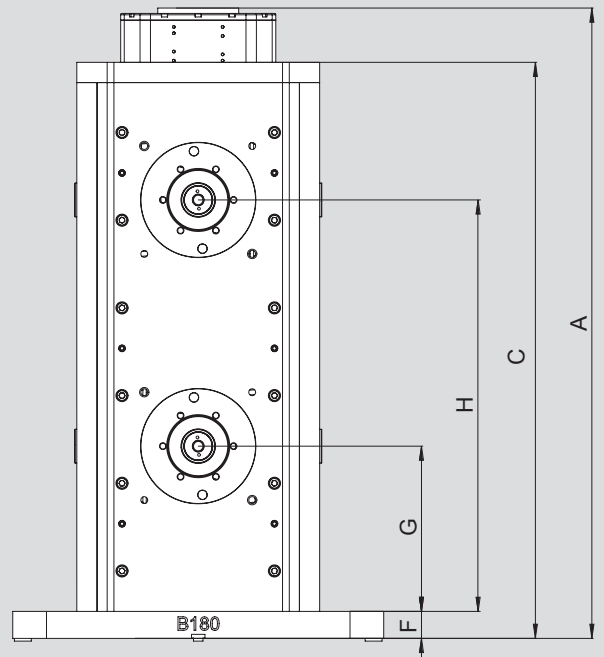
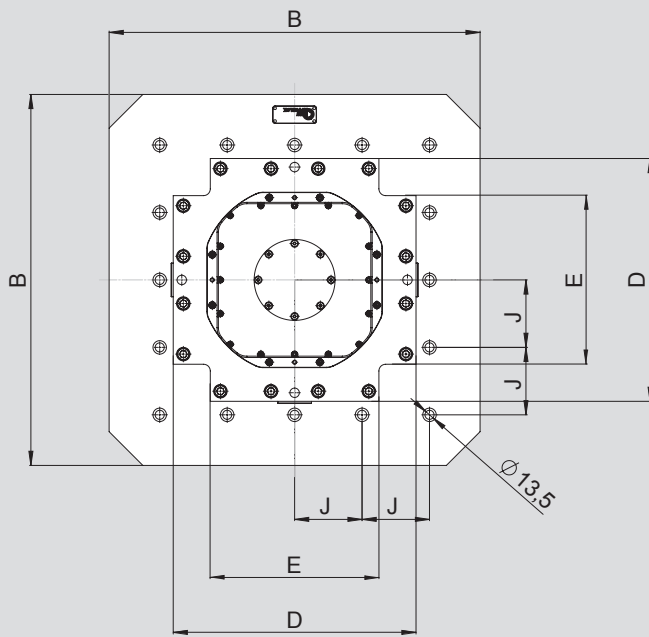
Inductive coupler
(Base / Remote)



AC-MM controller
(2 pcs. needed)



Cable set



Subject to technical changes.
For more detailed information please ask our customer service.

SMW-AUTOBLOK Type			RT e-motion
Id No.			463080
Height	A	mm	934.5
Width	B	mm	550
Height tombstone	C	mm	854
Total width of clamping station	D	mm	360
Support width of clamping station	E	mm	250
Height baseplate	F	mm	40
Clamping station	G	mm	245
Clamping station	H	mm	610
Position mounting holes	J	mm	100
Max. actuation force		kN	35
Max. effective axial actuation stroke		mm	21
Number of clamping stations		pcs.	8
Weight (without clamping devices)		kg	485

Customized designs on request.

Notes

**Germany**

SMW-AUTOBLOK Spannsysteme GmbH
Postfach 1151 • D-88070 Meckenbeuren
Wiesentalstraße 28 • D-88074 Meckenbeuren
Tel.: +49 (0) 7542 - 405 - 0
Vertrieb Inland ► vertrieb@smw-autoblok.de
Fax: +49 (0) 7542 - 3886
Sales International ► sales@smw-autoblok.de
Fax: +49 (0) 7542 - 405 - 181

**U.S.A.**

SMW-AUTOBLOK Corporation
285 Egidi Drive - Wheeling, IL 60090
Tel. +1 847 - 215 - 0591
Fax +1 847 - 215 - 0594
E-mail ► autoblok@smwautoblok.com

**Japan**

SMW-AUTOBLOK Japan Inc.
1-56 Hira, Nishi-Ku
461-Nagoya
Tel. +81 (0) 52 - 504 - 0203
Fax +81 (0) 52 - 504 - 0205
E-mail ► japan@smwautoblok.co.jp

**China**

SMW-AUTOBLOK (Shanghai) Work Holding Co., Ltd.
Building 6, No.72, JinWen Road, KongGang
Industrial Zone, ZhuQiao Town, Pudong District
201323, Shanghai P.R. China
Tel. +86 21 - 5810 - 6396
Fax +86 21 - 5810 - 6395
E-mail ► china@smwautoblok.cn

**Mexico**

SMW-AUTOBLOK Mexico, S.A. de C.V.
Acceso III No. 16 Int.9,
Condominio Quadrum
Industrial Benito Juarez
Querétaro, Qro. C.P. 76120
Tel. +52 (442) 209 - 5118
Fax +52 (442) 209 - 5121
E-mail ► smwmex@smwautoblok.mx

**India**

SMW-AUTOBLOK Workholding Pvt. Ltd.,
Plot No. 4, Weikfield Industrial Estate,
Gat No. 1251, Sanaswadi, Tal - Shirur,
Dist - Pune. 412 208
Tel. +91 2137 - 616 974
Fax +91 2137 - 616 972
E-mail ► info@smwautoblok.in

**Turkey**

SMW AUTOBLOK Makina San. Ve Tic. Ltd. Şti.
Yenişehir Mah, Osmanlı Blv, Volume Kurtköy Ofis
No:9, Kat:1, D:4, PK: 34912, Pendik, İstanbul
Tel. +90 216 629 - 2019
E-mail ► info@smwautoblok.com.tr

**Sweden / Norway**

SMW-AUTOBLOK Scandinavia AB
Kasernvägen 2
SE - 281 35 Hässleholm
Tel. +46 (0) 761 420 111
E-mail ► info@smw-autoblok.se

**Italy**

AUTOBLOK s.p.a.
Via Duca D'Aosta n.24
Fraz. Novaretto
I-10040 Caprie - Torino
Tel. +39 011 - 9638411
Tel. +39 011 - 9632020
Fax +39 011 - 9632288
E-mail ► info@smwautoblok.it

**France**

SMW-AUTOBLOK
17, Avenue des Frères Montgolfier - Z.I. Mi-Plaine
F-69680 Chassieu
Tel. +33 (0) 4 - 727 - 918 18
Fax +33 (0) 4 - 727 - 918 19
E-mail ► autoblok@smwautoblok.fr

**Great Britain**

SMW-AUTOBLOK Telbrook Ltd.
7 Wilford Industrial Estate
Ruddington Lane, Wilford
GB-Nottingham, NG11 7EP
Tel. +44 (0) 115 - 982 1133
E-mail ► info@smw-autoblok-telbrook.co.uk

**Spain**

SMW-AUTOBLOK IBERICA, S.L.
Ursalto 4 - Pab. 9-10 Pol. 27
20014 Donostia - San Sebastián (Gipuzkoa)
Tel.: +34 943 - 225 079
Fax: +34 943 - 225 074
E-mail ► info@smwautoblok.es

**Russia**

SMW-AUTOBLOK Russia
B. Tulskeya str., 10, bld.3, off. 323,
115191 Moscow (Russia)
Tel. +7 495 -231-1011
Fax +7 495 -231-1011
E-mail ► info@smw-autoblok.ru

**Taiwan**

AUTOBLOK Company Ltd.
No.6, Shuyi Rd., South Dist.,
Taichung, Taiwan
Tel. +886 4-226 10826
Fax +886 4-226 12109
E-mail ► taiwan@smwautoblok.tw

**Czech Republic / Slovakia**

SMW-AUTOBLOK s.r.o.
Merhautova 20
CZ - 613 00 Brno
Tel. +420 513 034 157
Fax +420 513 034 158
E-mail ► info@smw-autoblok.cz

**Poland**

SMW-AUTOBLOK Poland Sp. z o.o.
Ul Ligocka 103 - Building 8
40-568 Katowice
Tel. +48 (0) 664 673 428
E-mail ► info@smwautoblok.pl

**Korea**

SMW-AUTOBLOK KOREA CO., LTD.
1108 ho, Baeksang Startower 1st,
65, Digital-ro 9-gil, Geumcheon-gu
Seoul, ROK-08511, Korea
Tel. +82 2 6267 9505
Fax +82 2 6267 9507
E-mail ► info-korea@smw-autoblok.net