

BKG® JCP 1724 Jet Cleaner

Remove Polymers and Compounds from Metallic Parts.

Suitable for removing all types of thermoplastic and thermoset compounds from metal parts and extrusion hardware in a safe, efficient manner without the use of cleaning media.

The BKG® JCP 1724 Jet Cleaner with working dimensions of Ø393mm x 596mm depth (Ø15.5" x 23.5") represents one of the most popular model sizes of the BKG® Jet Cleaner product line. It is ideally suited for small to intermediate cleaning applications. All BKG® Jet Cleaners utilize heat and vacuum to remove material, such as thermoplastic from metal parts. In most cases, cleaning cycles are accomplished within 120-240 minutes at an operating temperature range between 427°C and 482°C (800°F and 900°F) and a vacuum of 635mm (25") of mercury. The unit can be easily installed in any area that has water supply, water drain and electrical power facilities available.

Features and Benefits

Features

- Suitable for cleaning BKG® Flex Discs
- Suitable for cleaning BKG® Die Plates

Benefits

- Capable of removing most polymeric materials
- Fast cleaning cycle
- Simple operation
- Reliable and maintenance-free operation
- Gentle cleaning extends part life
- Operator safety
- Energy-saving operation
- Labor saving
- FEP - OPTIONAL UNIT AVAILABLE



Operation

Cleaning is totally automatic.

The operator loads the parts into the parts tray, moves the carriage assembly to the operating position, secures the door, sets the cycle time and temperature, starts the unit and walks away. The parts to be cleaned are heated in an oxygen starved chamber where the polymer melts and drains into the primary trap collector pan. Remaining polymer is vaporized and then water is scrubbed in a secondary trap where condensation is collected in a secondary trap basket. At the end of the cycle, the chamber is automatically depressurized and the heaters and vacuum pump shut down. The operator then simply opens the chamber door, removes the cleaned parts, checks and cleans the traps, if necessary, and the unit is ready for another cycle.

Safety

Since cleaning takes place under vacuum, combustion does not occur. This feature provides a high degree of operator safety and the parts are equally protected from excessive or localized high temperatures, ensuring freedom from annealing and stress cracking.

Environment

Clean your tooling by removing material, not burning it away. Cleaning in an oxygen starved chamber eliminates combustion and minimizes environmental impact. Consult our Environmental Report for additional details.

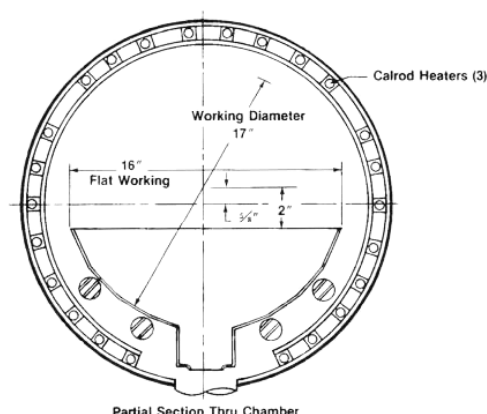


BKG® JCP 1724 Jet Cleaner

Specifications

Standard Units	Cleaning Capacity Dimensions (mm)	Cleaning Capacity Dimensions (inches)
JC-MINI	241 x 304	Ø9.5 x 12
JC-1724	393 x 596	Ø15.5 x 23.5
JC-1760	393 x 1524	Ø15.5 x 60
JC-2448	609 x 1219	Ø24 x 48
JC-2484*	609 x 2133	Ø24 x 84
JC-24100*	539 x 2540	Ø21.25 x 100
JC-3648	914 x 1219	Ø36 x 48
JC-3672*	914 x 1828	Ø36 x 72
JC-40160*	711 x 4064	Ø28 x 160
JC-5484*	1092 x 2108	Ø43 x 84

* Depends on weight of part(s) to be cleaned.



BKG® JCP 1724 & 5484

Primary Trap

Located beneath and attached to the chamber, it collects any melted resin. Trap consists of a cast aluminum housing with swing bolt clamped cover containing a seal gasket. Removable stainless steel collector pan is included.

Secondary Trap

Positioned vertically in the pipe run between the chamber and vacuum pump. Condenses and collects any vapors by means of a water spray mist scrubber. Fabricated from welded carbon steel with quick open cover containing a seal gasket. Included is removable collector pan.

Vacuum Pump

Water-ring design vacuum pump with integral TEFC motor mounted to frame of unit. Inlet port connection is in-line with the chamber and secondary trap. Outlet port feeds the water-vapor separator.

Water-Vapor Separation

Located in the vacuum pump outlet line. It directs water to drain and vapors to atmosphere. Customer provides pipe connection to atmosphere, locates and wires optional exhaust fan.

Other

Included are appropriate solenoid operated water and air valves along with a filter in the water inlet line and a preset water flow rate control.

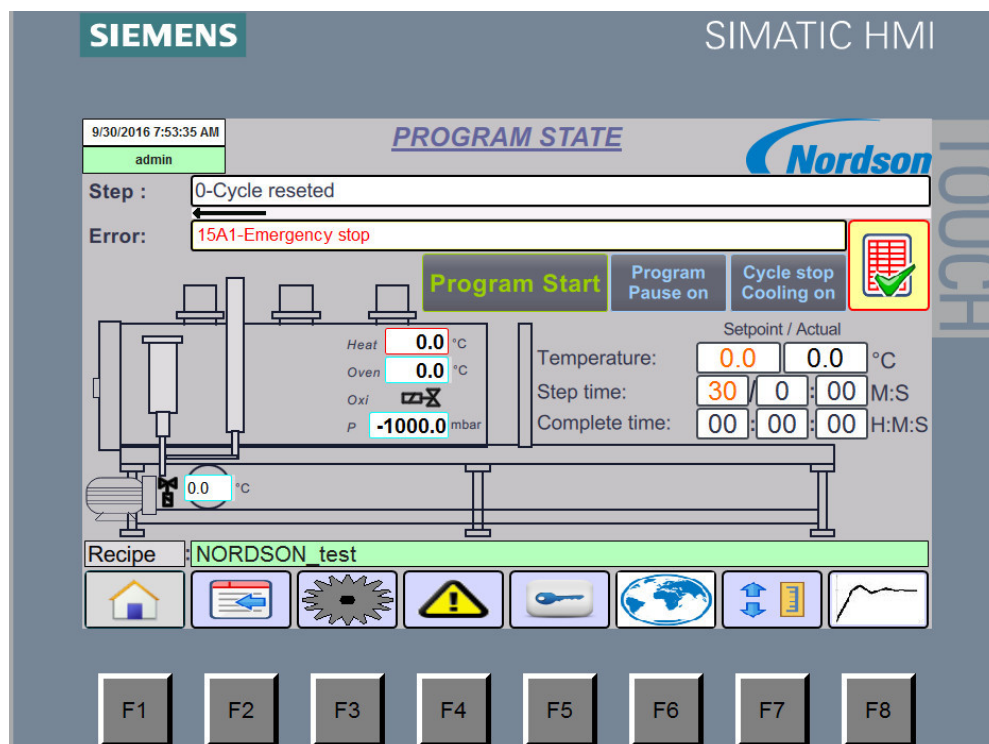


BKG® JCP 1724 Jet Cleaner Oven Control

The new oven control for BKG® Jet Cleaners provides improved configuration options and recipe management for an optimized and more convenient operation.

Advantages

- Uncomplicated and faster control through intuitive, graphical touch display
- Fast intervention and process adjustment is possible with rapid detection of errors and incidents displayed, through error message complete with component identification and description
- Optimize future cleaning cycles through error documentation and identification of reoccurring errors and subsequent possible value adjustment
- Easy and convenient monitoring through continuous display of nominal and actual values during entire cleaning cycle
- Efficient and convenient recipe administration through storage capacity of up to 100 cleaning recipes, with copy and customize function, easy recipe optimization and recipe management with name assignment
- Easy reset to other languages and the possibility of language extension



Nordson PPS GmbH
Coermühle 1
48157 Münster / Germany
+49.251.21405.0 **Phone**

USA
+1.724.656.5600 **Phone**

Thailand
+66.38.717.084 **Phone**

China
+86.21.5785.091.8 **Phone**

www.nordsonpolymerprocessing.com | info@nordsonpolymerprocessing.com
© 2016 Nordson PPS
Printed in Germany
10/2016

