

# KELLY VALVES

Metallic sealing  
Kelly Valves for drill string

Safe.  
Low maintenance.  
Long-lasting.



# KELLY VALVES



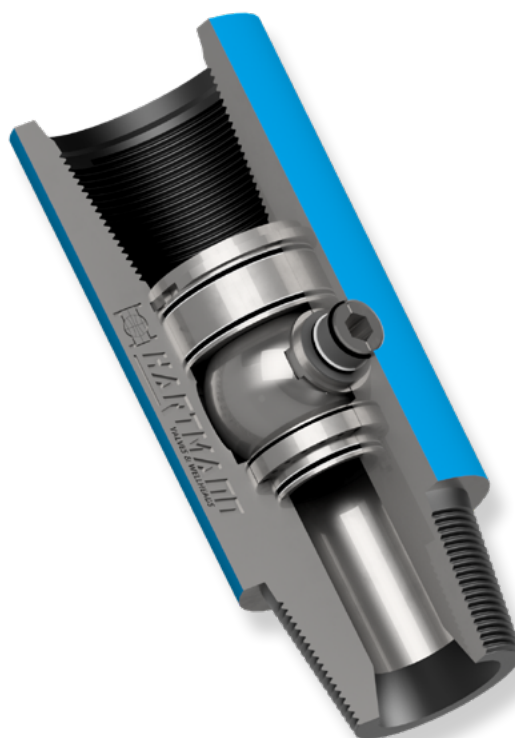
## TECHNICAL CHARACTERISTICS

### DESIGN & QUALIFICATION

- One-piece-body
- Floating ball
- Metallic sealing
- Spring-loaded-seats
- H2S Trim
- CLASS 2
- Manufactured to API Specification 7-1 and in compliance with ISO 9001:2015
- Optional available with Type Approval DNV or ABS

### OPTIONS

- Double Shaft Kelly Valve  
(One ball with two operating shafts)
- Twinball Quad Shaft Kelly Valve  
(Two balls with four operating shafts)
- Break In  
(power fitting for easy on-site assembly)
- Spare Part Kits

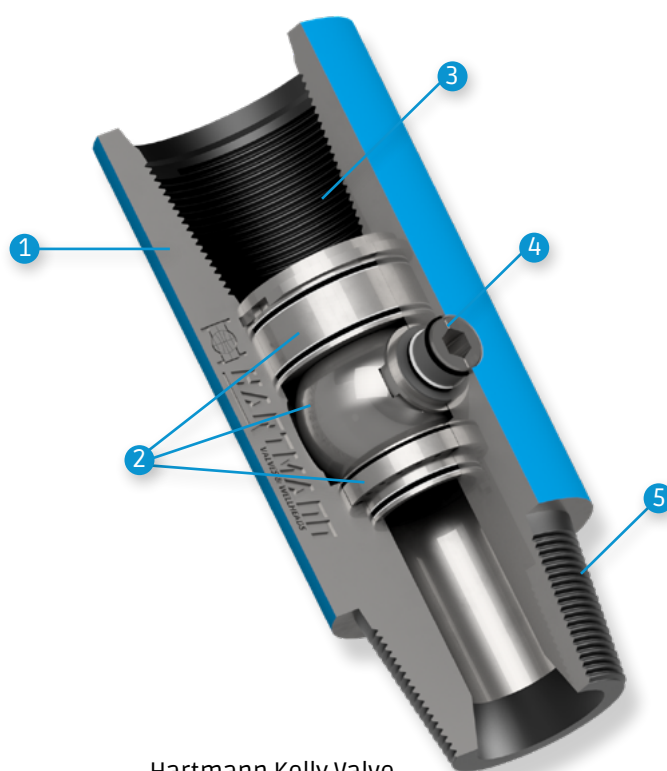


# STANDARD SUPPLY RANGE

THREAD	PRESSURE [PSI]	TEMPERATURE CLASS	OD [IN]	ID [IN]	OVERALL LENGTH [SH/SH]	CLASS 2	REMARKS
6 5/8 REG	10.000	L/X	7 3/4	3 1/4	350 mm	●	LOCKING DEVICE
					345 mm	●	LOCKING DEVICE
7 5/8 REG	15.000	L/X	8 1/2	3 1/16	385 mm	●	LOCKING DEVICE
					540 mm	●	LOCKING DEVICE
			10	3 1/4	385 mm	●	LOCKING DEVICE
					385 mm	●	LOCKING DEVICE
8 5/8 REG	15.000	L/X	10	4 1/4	457,2 mm	●	DOUBLE SHAFT KELLY VALVE, LOCKING DEVICE
					457,2 mm	●	LOCKING DEVICE
NC61	15.000	L/X	9	3 1/16	365 mm	●	LOCKING DEVICE
	10.000	L/X		3 1/4	365 mm	●	LOCKING DEVICE
NC50 (4 1/2 IF)	10.000	L/X	6 5/8	2 13/16	381 mm	●	LOCKING DEVICE

In addition to the standard delivery program, other designs are available on request.

ITEM	DESCRIPTION
1	Housing
2	Ball seat ring unit
3	Box connection
4	Operating shaft
5	Pin connection



Hartmann Kelly Valve



# WHAT DISTINGUISHES US?



## HARTMANN VALVES & WELLHEADS

We start where others stop: Hartmann develops custom-build performance components of the highest quality.

Hartmann Valves is a leading manufacturer of ball valves, pigging valves and wellheads. Our worldwide experience lies in the fields of crude oil, natural gas, petrochemicals, power stations, geothermal and emerging renewables such as hydrogen. Our customers value and endorse our pure metallic sealing system. Design, assembly and tests are carried out solely in our facilities in Celle and Burgdorf-Ehlershausen, Germany.

Founded in 1946, this family-owned and managed company is in its third generation and continues to evolve as an international operating organization now with 200 employees.



### INSIGHTS INTO OUR PRODUCTION

[www.hartmann-valves.com/en/film](http://www.hartmann-valves.com/en/film)

## YOUR BENEFITS WITH OUR KELLY VALVES



**SHORT TERM AND  
FAST DELIVERY**



**REDUCED COSTS THROUGH  
PRODUCT LONGEVITY**



**EXPERIENCE IN THE OIL  
AND GAS INDUSTRIE**



**SPARE PART KITS  
AVAILABLE**

# REFERENCE

„During our last drilling campaign in the second quarter of 2021, we have used Hartmann API 6A Wellhead components, high pressure Kelly Valves (10.000 psi) and cooperated with the Hartmann on-site Service Team. Several pressure tests confirmed the high quality and outstanding performance. We are happy to give an unrestricted recommendation for the products from Hartmann Valves GmbH.“

**BERTHOLD KIBELLUS**  
H. Anger's Söhne GmbH

## GET IN CONTACT



**NORA GREBIES**  
N.Gressies@hartmann-valves.com  
+49 5141 3841 83

**HARTMANN VALVES GMBH**  
Bussardweg 15  
31303 Burgdorf-Ehlershausen  
Germany