



NEDCON Open Face Miniload

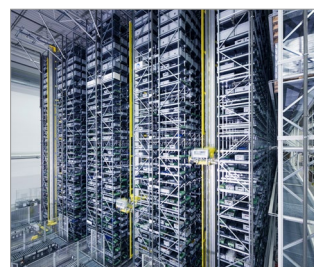
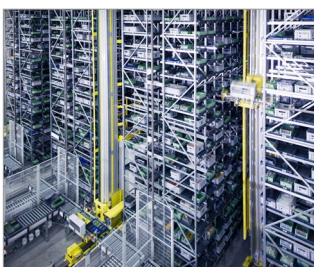


NEDCON's Open Face Miniload or "ladder rack" systems are designed for the trouble-free automatic storage of small parts and norm totes. Let our engineers help you get the most out of every square foot of your building. NEDCON has extensive experience with automated storage systems and supplies Open Face Miniload systems with system integrators to customers in every sector.

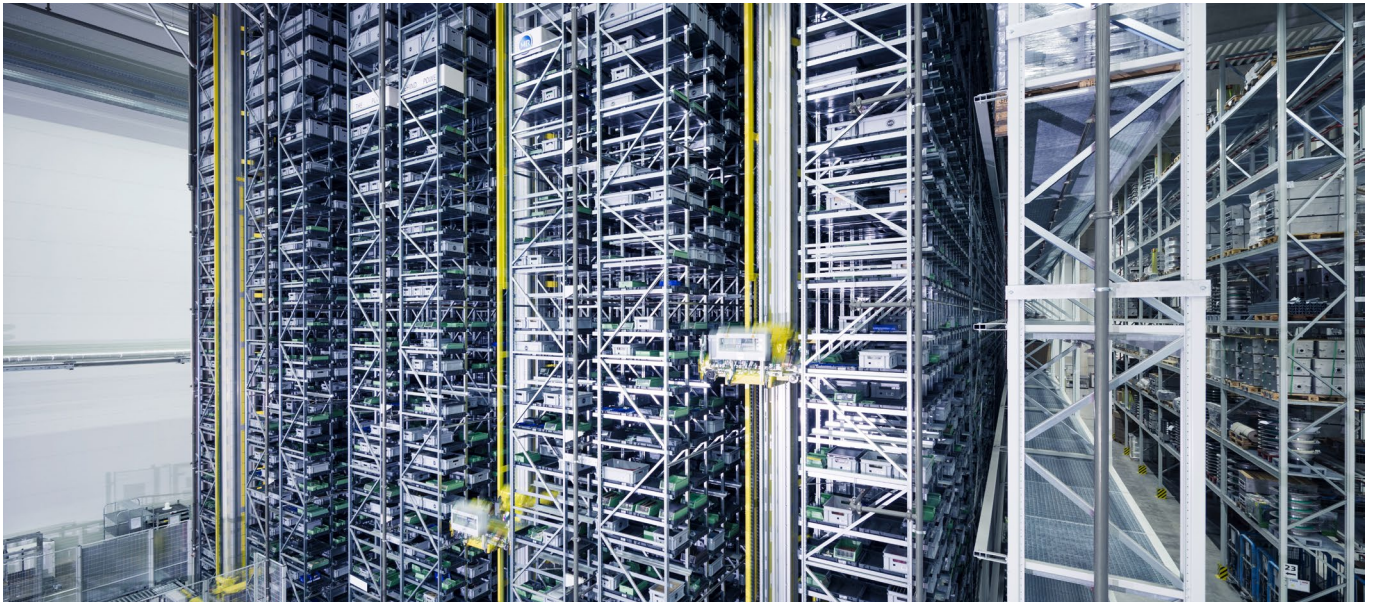
The Open Face Miniload system has an open profile on the front: you can automatically store totes of small parts at any desired height on load support angle profiles. The systems are available up to a heights of 30 meters [98 feet]. The shorter the crates, the greater the vertical storage density.

Advantages of NEDCON's Open Face Miniload systems

- Very large storage capacities possible
- All positions have side rails
- Flexible thanks to modular construction
- Meet high tolerance requirements
- Everything in-house, from design to installation
- Robust and safe
- More than meet European and US standards
- Available as galvanized steel or powder coated
- Also, available in stainless steel



If it can be done,
consider it done



Custom-made

Functionality comes first. Your logistic process must proceed smoothly. Because we have design, production and installation in-house, we can set up custom-made systems and adjust them with millimeter precision to meet the capabilities of your cranes and shuttles. Thanks to the modular construction, you can easily combine your system with flow systems, mezzanine floors, order pick applications and even extend your system in the future. For the Food & Beverage sector, special models are available with food-grade stainless steel or in a steel alloy that is resistant to prolonged extreme hot or cold temperatures.

