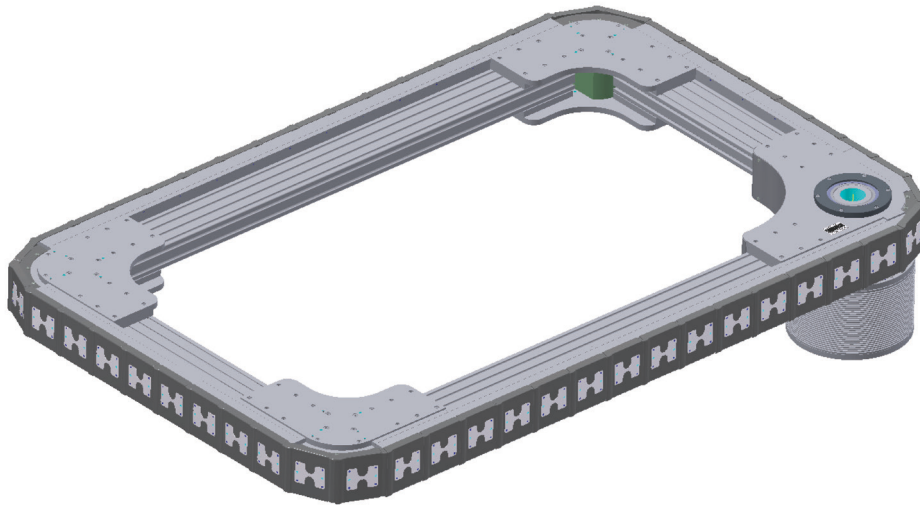


# LATC – The high-precision rectangular transport system

## New solutions for your production processes

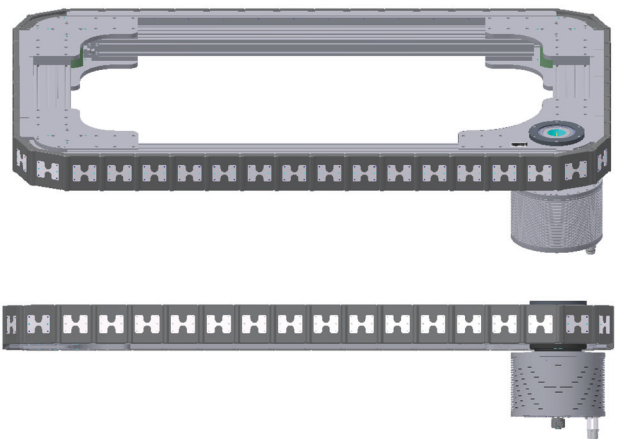


- Extra space in the middle for equipment
- Designed for central arrangement of processes
- Maintenance-free transport system
- Robust base frame
- Very short indexing times starting from 0.2 s
- Positioning accuracy up to  $\pm 0.04$  mm
- Highest reliability inherited from the established LFA linear transfer system
- Driven by a torque or servo motor
- Use of up to 4 motors to cope with high loads
- Custom feed length

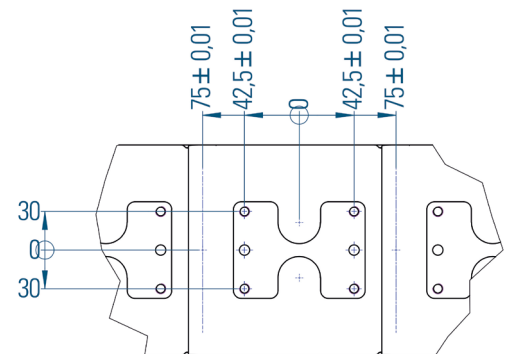
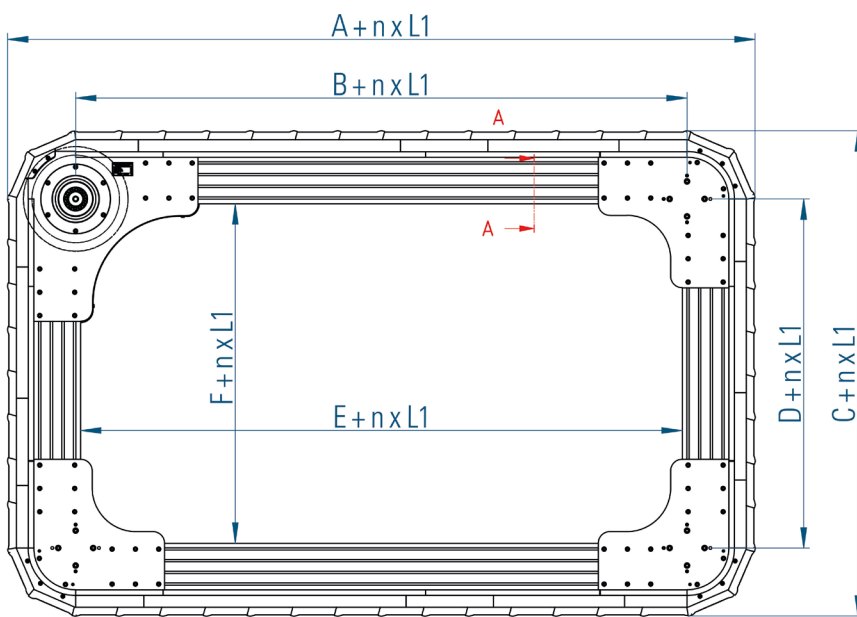
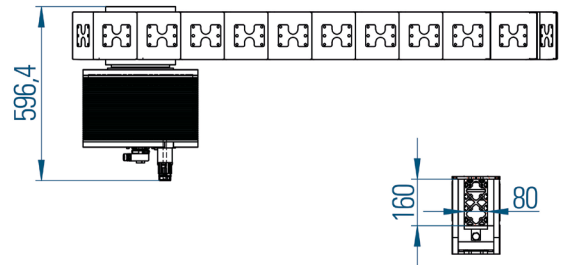
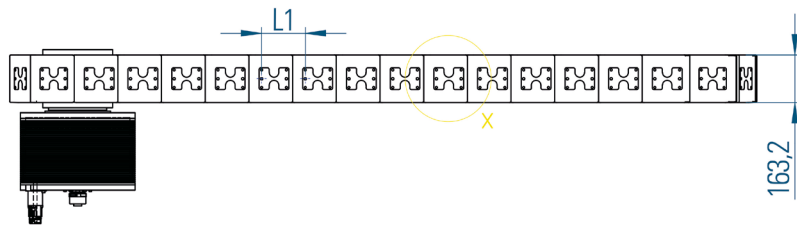
- Compact design
- Short delivery times
- Variable dimensions (length, width)

**Find out now!**

**[www.taktomat.com](http://www.taktomat.com)**



# LATC – The high-precision rectangular transport system



L1	A	B	C	D	E	F
150mm	1213.7mm	747mm	1214.7mm	748mm	713.7mm	714.7mm

