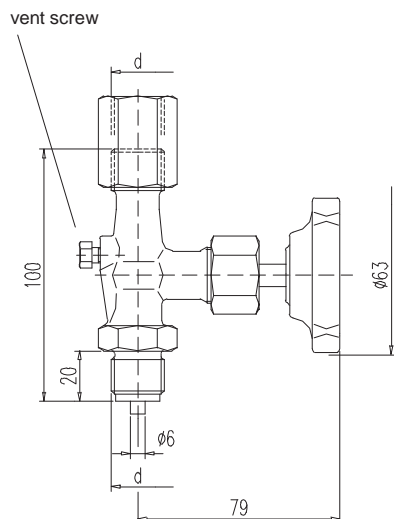


Pressure gauge Valves as per **DIN 16270**

Rel. 20180702

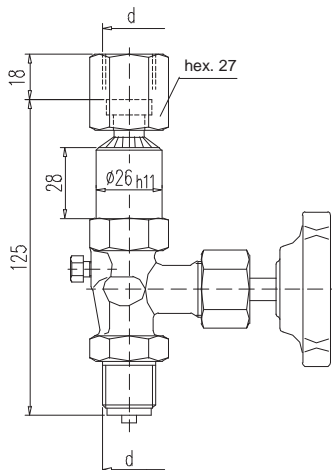
**Design A**

with adjusting nut  
DIN 16 283

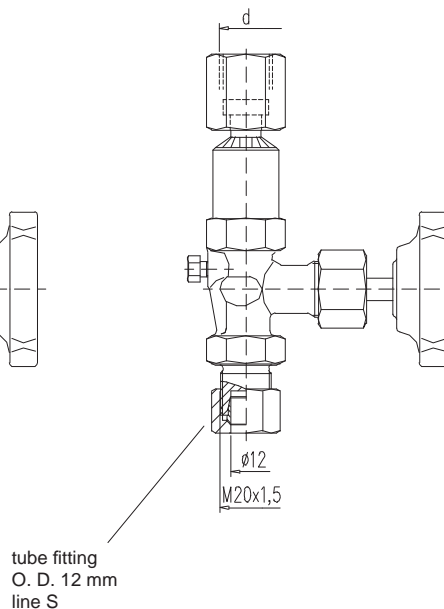


**Design B**

with swivel nut and shaft for  
pressure gauge support



**Design B - AS12**



tube fitting  
O. D. 12 mm  
line S

PN <sup>3)</sup>	Connection thread d	Material	Part no.		
			Design A	Design B	Design B-AS12
250 400 400	G 1/2	brass	003.4.160.0000.0	S004.16.020	S004.16.020.13
		steel	003.4.161.0000.0	S004.16.120	S004.16.120.13
		st. st.	003.4.162.0000.0	S004.16.220	S004.16.220.13
250 400 400	M 20x1,5	brass	S004.16.050	-	-
		steel	S004.16.150	-	-
		st. st.	S004.16.250	-	-

Components	Brass <sup>1)</sup>	Steel	Stainless steel <sup>1)</sup>
	DIN - Material Number		
Body <sup>2)</sup>	brass	1.0460	1.4571
Valve stem	1.4104		1.4571
Needle tip	1.4104		1.4571
Packing	PTFE up to 200°C (graphite up to 250°C)		
Union nut	steel		stainless steel
Adjusting nut	steel		stainless steel
Swivel nut	brass	steel	stainless steel
Vent screw	1.4571		
Handwheel	plastic		

Abbreviation acc. to DIN	Material	Temperature rating
10 Ms	brass	- 10 up to + 120°C
10 St	steel	- 10 up to + 120°C
20 St	stainless steel	- 20 up to + 200/250°C

- **Body:** brass: pressed part  
steel / stainless steel: die-pressed part
- **Surface:** steel phosphatized
- Internal stem thread
- Stem with cold rolled surface and non-rotating needle tip

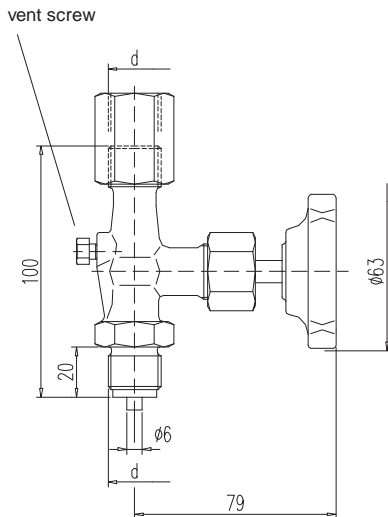
- 1) Can also be supplied for oxygen service.  
Please notice order instruction B 3!
- 2) Available with inspection certificate 3.1.B acc. to EN 10 204
- 3) Valves with PN 640 on request



Pressure gauge Valves similar to **DIN 16270 - DVGW tested**

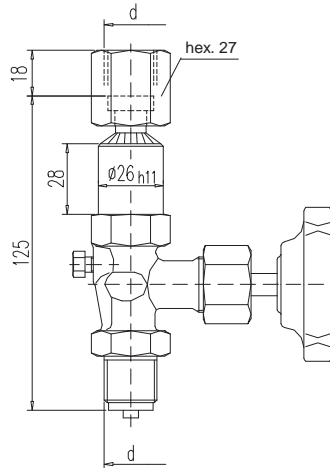
**Design A**

with adjusting nut  
DIN 16 283

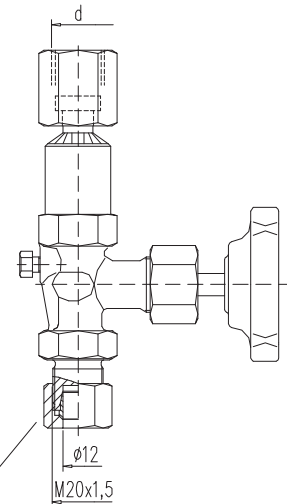


**Design B**

with swivel nut and shaft for  
pressure gauge support



**Design B - AS12**



tube fitting  
O. D. 12 mm  
line S

**D V G W - Registration**

DVGW-Register-No.

DG-4315BQ0226

PN	Connection thread d	Material	Part no.		
			Design A	Design B	Design B-AS12
100	G 1/2	brass	003.4.260.0000.0	S004.26.020	-
		steel	003.4.261.0000.0	S004.26.120	S004.26.120.13
		st. st.	003.4.262.0000.0	S004.26.220	S004.26.220.13

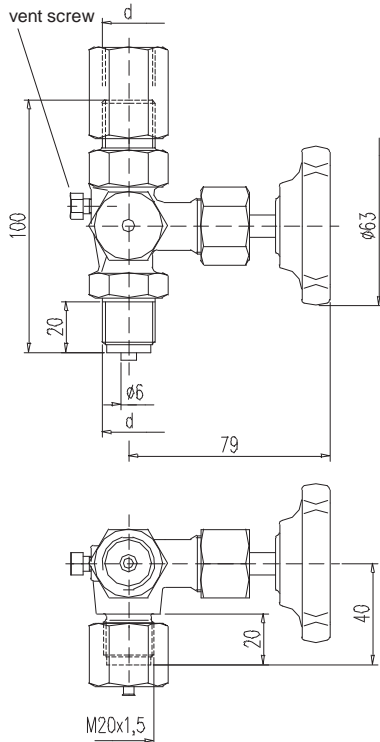
Components	Brass	Steel	Stainless steel
	DIN - Material Number		
Body	brass	1.0460	1.4571
Valve stem	1.4104		1.4571
Needle tip	1.4104		1.4571
O-rings	FPM (Viton®)		
O-ring retainer	brass		1.4571
Union nut	galv. steel	steel	stainless steel
Adjusting nut	brass	steel	stainless steel
Swivel nut	brass	steel	1.4571
Vent screw	1.4571		
Handwheel	plastic		

- **Body:** brass: pressed part  
steel / stainless steel: die-pressed part
- **Surface:** steel phosphatized
- Internal stem thread
- Stem with colled rolled surface and non-rotating needle tip
- Max. operating pressure: 100 bar  
Temperature: - 5°C up to + 60°C
- Basis of type examination: DVGW VP 308
- For all kinds of gas in accordance with DVGW-list number G 260
- Available with inspection certificate 3.1 acc. to EN 10 204

Pressure gauge Valves as per **DIN 16271, test stud M 20x1,5**

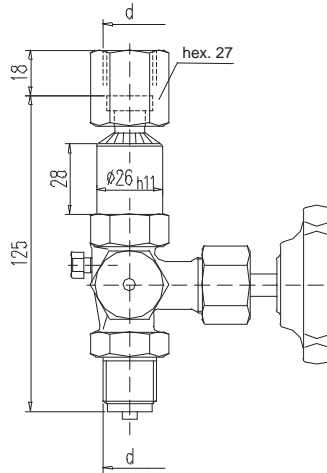
**Design A**

with adjusting nut  
DIN 16 283

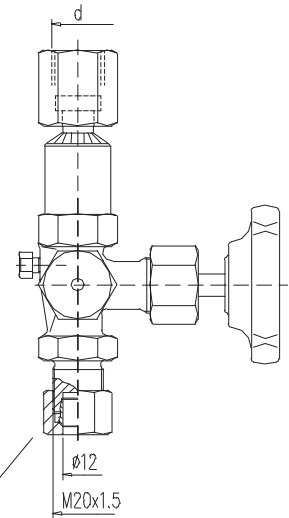


**Design B**

with swivel nut and shaft for  
pressure gauge support



**Design B - AS12**



tube fitting  
O. D. 12 mm  
line S

PN <sup>3)</sup>	Connection thread d	Material	Part no.		
			Design A	Design B	Design B-AS12
250 400 400	G 1/2	brass	003.4.170.0000.0	S004.17.020	S004.17.020.13
		steel	003.4.171.0000.0	S004.17.120	S004.17.120.13
		st. st.	003.4.172.0000.0	S004.17.220	S004.17.220.13
250 400 400	M 20x1,5	brass	S004.17.050	-	-
		steel	S004.17.150	-	-
		st. st.	S004.17.250	-	-

Components	Brass <sup>1)</sup>	Steel	Stainless steel <sup>1)</sup>
	DIN - Material Number		
Body <sup>2)</sup>	brass	1.0460	1.4571
Valve stem	1.4104		1.4571
Needle tip	1.4104		1.4571
Packing	PTFE up to 200°C (graphite up to 250°C)		
Sealing cap	steel		stainless steel
Union nut	steel		stainless steel
Adjusting nut	steel		stainless steel
Swivel nut	brass	steel	stainless steel
Vent screw	1.4571		
Handwheel	plastic		

Abbreviation acc. to DIN	Material	Temperature rating
10 Ms	brass	- 10 up to + 120°C
10 St	steel	- 10 up to + 120°C
20 St	stainless steel	- 20 up to + 200/250°C

- Body: brass: pressed part  
steel / stainless steel: die-pressed part
- Surface: steel phosphatized
- Internal stem thread
- Stem with cold rolled surface and non-rotating needle tip

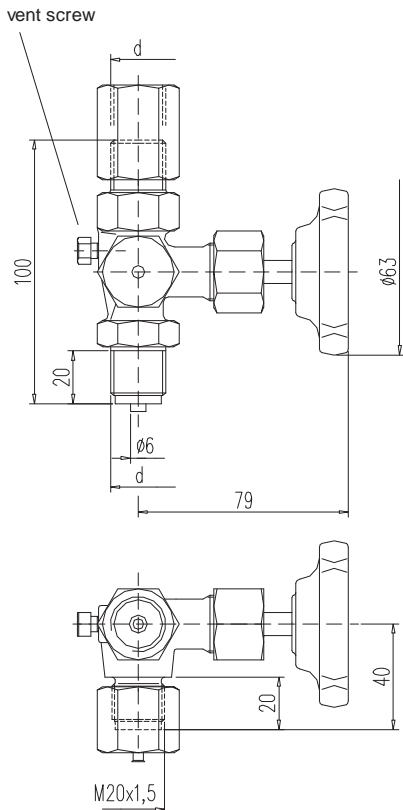
- 1) Can also be supplied for oxygen service. Please notice order instruction B 3!
- 2) Available with inspection certificate 3.1.B acc. to EN 10 204
- 3) Valves with PN 640 on request



Pressure gauge Valves similar **DIN 16271**, test stud M 20x1,5 - DVGW tested

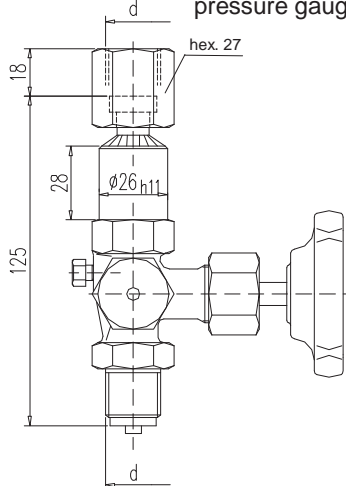
**Design A**

with adjusting nut  
DIN 16 283

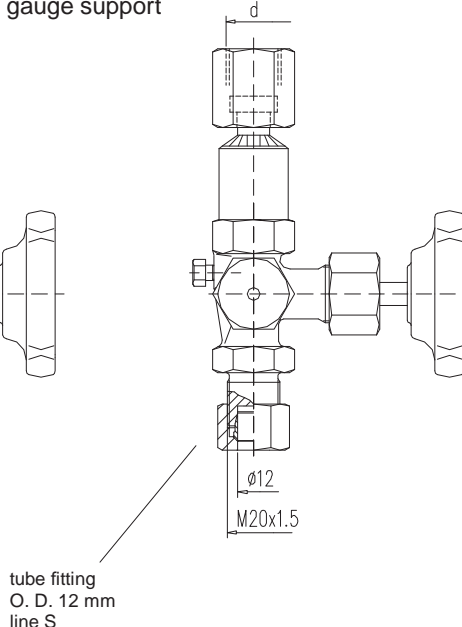


**Design B**

with swivel nut and shaft for  
pressure gauge support



**Design B - AS12**



**D V G W - Registration**

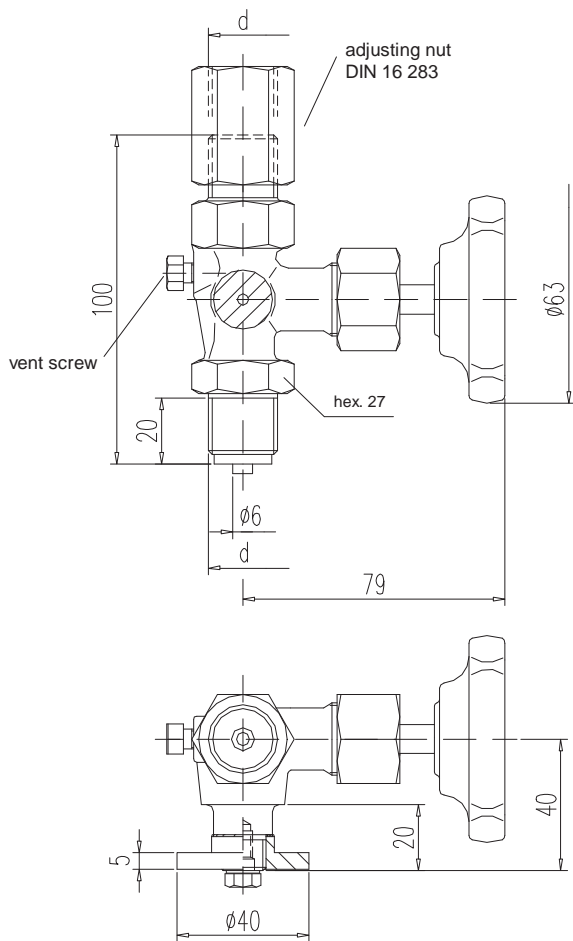
<b>DVGW-Register-No.</b>	DG-4315BQ0226
--------------------------	---------------

PN	Connection thread d	Material	Part no.		
			Design A	Design B	Design B-AS12
100	G 1/2	brass	S004.27.000	S004.27.020	-
		steel	S004.27.100	S004.27.120	S004.27.120.13
		st. st.	S004.27.200	S004.27.220	S004.27.220.13

Components	Brass	Steel	Stainless steel
	DIN - Material Number		
Body	brass	1.0460	1.4571
Valve stem	1.4104		1.4571
Needle tip	1.4104		1.4571
O-rings	FPM (Viton®)		
O-ring retainer	brass		1.4571
Sealing cap	galv. steel	steel	stainless steel
Union nut	galv. steel	steel	stainless steel
Adjusting nut	brass	steel	stainless steel
Swivel nut	brass	steel	1.4571
Vent screw	1.4571		
Handwheel	plastic		

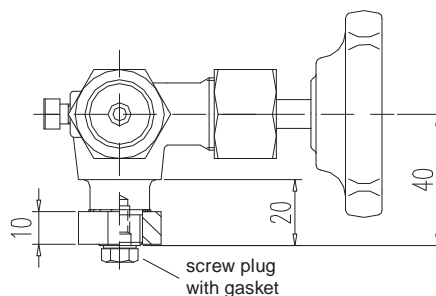
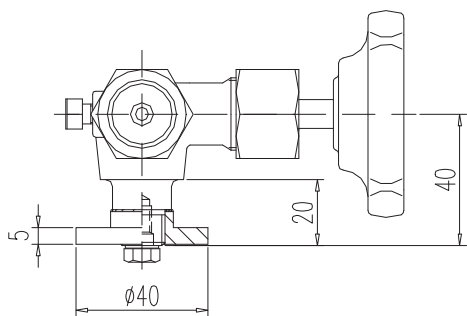
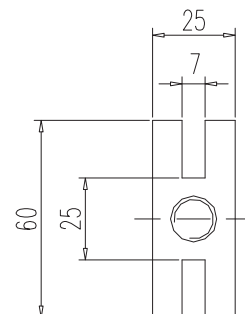
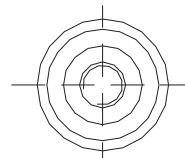
- **Body:** brass: pressed part  
steel / stainless steel: die-pressed part
- **Surface:** steel phosphatized
- Internal stem thread
- Stem with colled rolled surface and non-rotating needle tip
- Max. operating pressure: 100 bar  
Temperature: - 5°C bis + 60°C
- Basis of type examination: DVGW VP 308
- For all kinds of gas in accordance with DVGW-list number G 260
- Available with inspection certificate 3.1 acc. to EN 10 204

Pressure gauge Valves similar **DIN 16271, test flange**



test flange  
Ø 40 x 5 mm

test flange  
60 x 25 x 10 mm



PN	Connection thread d	Material	Part no. with test flange	
			Ø 40 x 5 mm	60 x 25 x 10 mm
250	G 1/2	brass	003.4.170.6000.0	003.4.170.7000.0
400		steel	003.4.171.6000.0	003.4.171.7000.0
400		st. st.	003.4.172.6000.0	003.4.172.7000.0

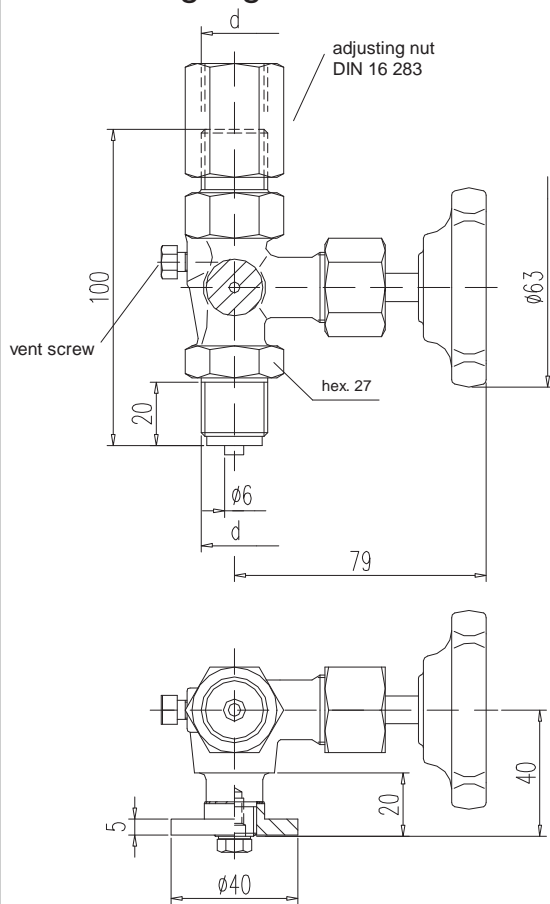
Components	Brass <sup>1)</sup>	Steel	Stainless steel <sup>1)</sup>
	DIN - Material Number		
Body <sup>2)</sup>	brass	1.0460	1.4571
Flange	brass	steel	1.4571
Valve stem	1.4104		1.4571
Needle tip	1.4104		1.4571
Packing	PTFE up to 200°C		
Union nut	steel		stainless steel
Adjusting nut	steel		stainless steel
Screw plug	steel		A4-70
Vent screw	1.4571		
Handwheel	plastic		

- **Body:** brass: pressed part  
steel / stainless steel: die-pressed part
- **Surface:** steel phosphatized
- Internal stem thread
- Stem with cold rolled surface and non-rotating needle tip

- 1) Can also be supplied for oxygen service. Please notice order instruction B 3!
- 2) Available with inspection certificate 3.1 acc. to EN 10 204

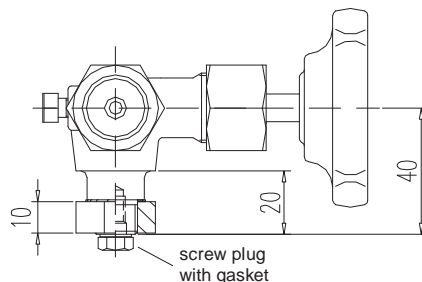
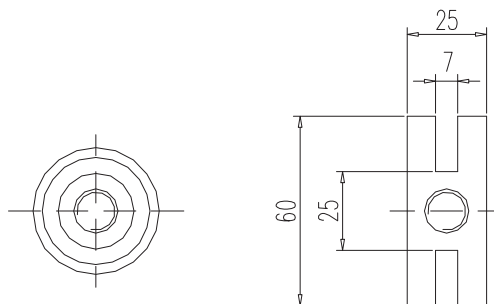


Pressure gauge Valves similar **DIN 16271, test flange - DVGW tested**



test flange  
Ø 40 x 5 mm

test flange  
60 x 25 x 10 mm



D V G W - Registration	
DVGW-Register-No.	DG-4315BQ0226

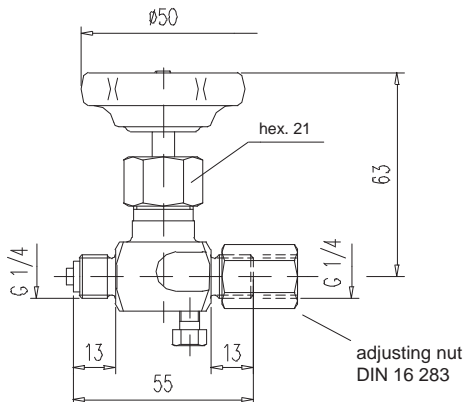
PN	Connection thread d	Material	Part no. with test flange	
			Ø 40 x 5 mm	60 x 25 x 10 mm
100	G 1/2	brass steel st. st.	S 004.27.060 S 004.27.160 S 004.27.260	S 004.27.070 S 004.27.170 S 004.27.270

Components	Brass	Steel	Stainless steel
	DIN - Material Number		
Body	brass	1.0460	1.4571
Flange	brass	steel	1.4571
Valve stem	1.4104		1.4571
Needle tip	1.4104		1.4571
O-rings	FPM (Viton®)		
O-ring retainer	brass		1.4571
Union nut	galv. steel	steel	stainless steel
Adjusting nut	brass	steel	stainless steel
Screw plug	steel		A4-70
Vent screw	1.4571		
Handwheel	plastic		

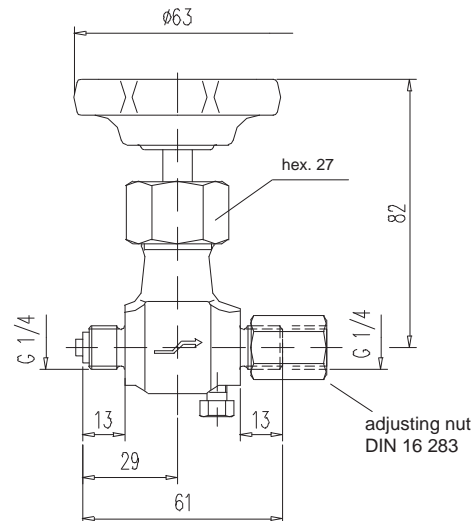
- Body: brass: pressed part  
steel / stainless steel: die-pressed part
- Surface: steel phosphatized
- Internal stem thread
- Stem with cold rolled surface and non-rotating needle tip
- Max. operating pressure: 100 bar  
Temperature: - 5°C up to + 60°C
- Basis of type examination: DVGW VP 308
- For all kinds of gas in accordance with DVGW-list number G 260
- Available with inspection certificate 3.1 acc. to EN 10 204

Pressure gauge Valves male/female swivel nut 1/4" BSP

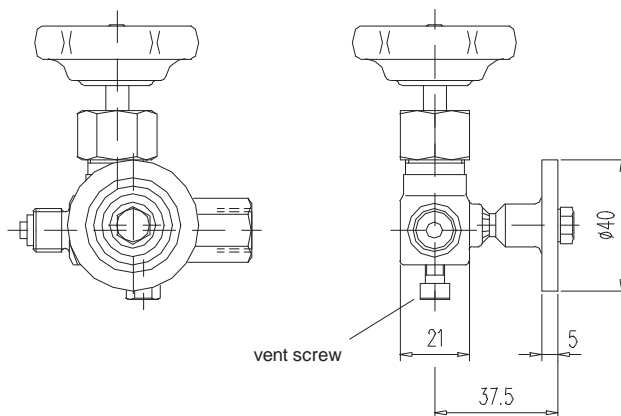
Type 1



Type 2



Type 3



PN	Type	Material	Temperature rating	Part no.
125	1	brass	- 10 up to + 120°C	003.4.120.0000.0
250	2	steel st. st.	- 10 up to + 120°C - 20 up to + 200°C	S004.13.130 S004.13.230
125	3	brass	- 10 up to + 120°C	S004.12.065

Components	Brass <sup>1)</sup>	Steel	Stainless steel <sup>1)</sup>
	DIN - Material Number		
Body <sup>2)</sup>	brass	1.0460	1.4571
Valve stem	brass	1.4104	1.4571
Needle tip	brass	1.4104	1.4571
Packing	PTFE		
Union nut	brass	steel	stainless steel
Adjusting nut	brass	steel	stainless steel
Vent screw	1.4571		
Handwheel	plastic		

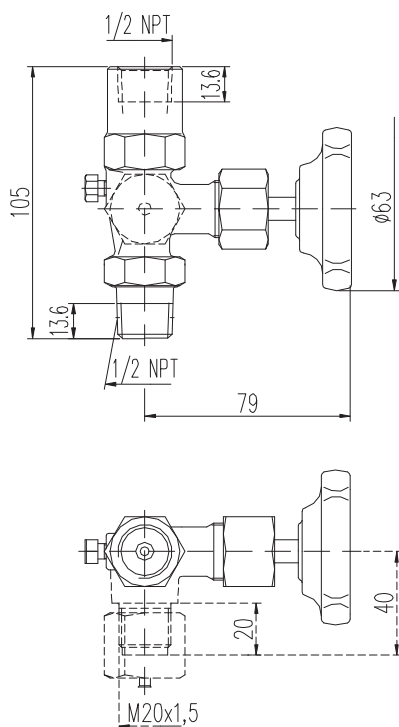
- Body: brass: pressed part  
steel / stainless steel: die-pressed part
- Surface: steel phosphatized
- Internal stem thread

- 1) Can also be supplied for oxygen service. Please notice order instruction B 3!
- 2) Available with inspection certificate 3.1.B acc. to EN 10 204

## Pressure gauge Valves male/female 1/2" NPT Pressure gauge Double Valves male/female 1/2" NPT

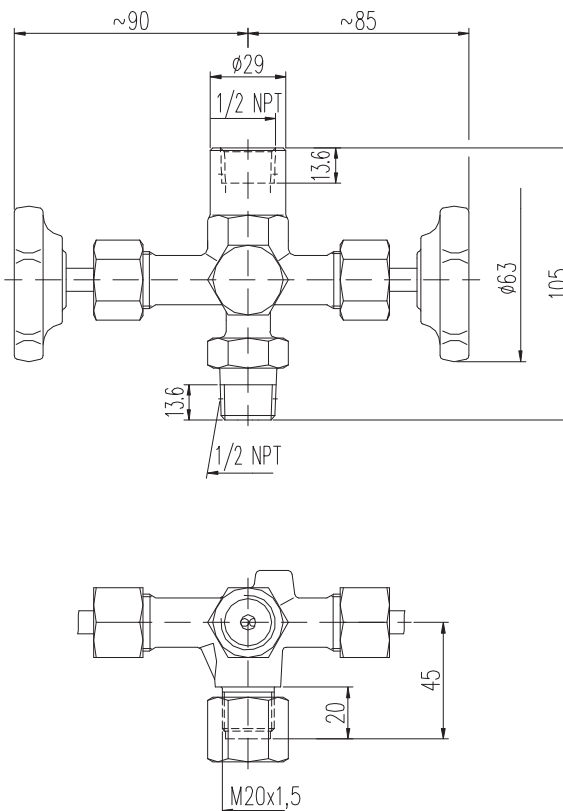
### Type 1

Pressure gauge valve without  
alternative with test connection



### Type 2

Double pressure gauge valve  
with test connection



PN	Connection thread d	Material	Part no.		
			without test connection	Type 1 with test connection M 20 x 1,5	Type 2 with
400	1/2 NPT	steel st. st.	S004.16.183 S004.16.283	S004.17.135.02 <sup>3)</sup> S004.17.235.02 <sup>3)</sup>	S004.60.135.02 S004.60.235.02

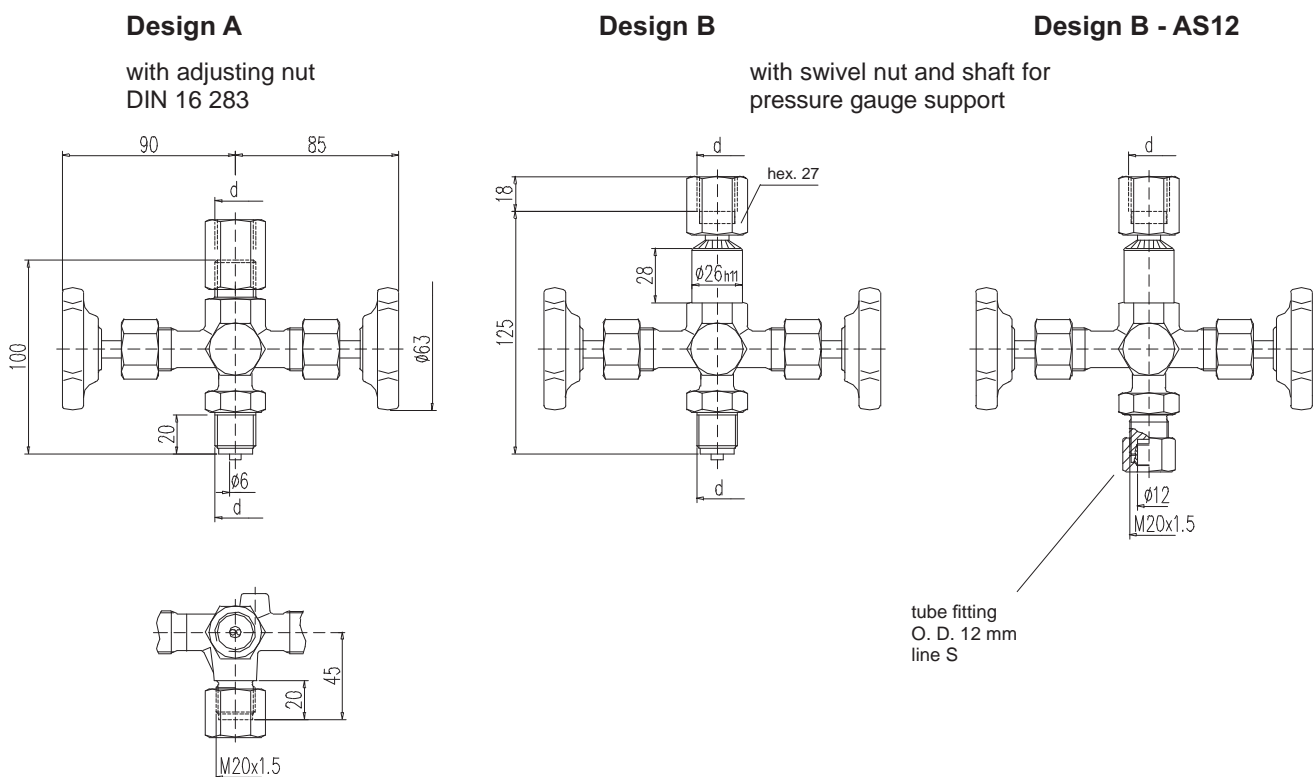
Components	Steel	Stainless steel <sup>1)</sup>
	DIN - Material Number	
Body <sup>2)</sup>	1.0460	1.4571
Valve stem	1.4104	1.4571
Needle tip	1.4104	1.4571
Packing	PTFE up to 200°C	
Union nut	steel	stainless steel
Vent screw	1.4571	
Handwheel	plastic	

- Body: die-pressed part
- Surface: steel phosphatized
- Internal stem thread
- Stem with cold rolled surface and non-rotating needle tip
- Valves with alternative test connections optional

- 1) Can also be supplied for oxygen service. Please notice order instruction B 3!
- 2) Available with inspection certificate 3.1.B acc. EN 10 204
- 3) With protecting cap and sealing lense



Pressure gauge Double Valves similar **DIN 16272**, test stud **M20x1,5**



PN <sup>3)</sup>	Connection thread d	Material	Part no.		
			Design A	Design B	Design B-AS12
250 400 400	G 1/2	brass	003.4.600.0000.0	S004.60.020	S004.60.020.13
		steel	003.4.601.0000.0	S004.60.120	S004.60.120.13
		st. st.	003.4.602.0000.0	S004.60.220	S004.60.220.13
250 400 400	M 20x1,5	brass	S004.60.050	-	-
		steel	S004.60.150	-	-
		st. st.	S004.60.250	-	-

Components	Brass <sup>1)</sup>	Steel	Stainless steel <sup>1)</sup>
	DIN - Material Number		
Body <sup>2)</sup>	brass	1.0460	1.4571
Valve stem	1.4104		1.4571
Needle tip	1.4104		1.4571
Packing	PTFE up to 200°C (graphite up to 250°C)		
Union nut	steel		stainless steel
Adjusting nut	steel		stainless steel
Swivel nut	brass	steel	stainless steel
Handwheel	plastic		

Abbreviation acc. to DIN	Material	Temperature rating
10 Ms	brass	- 10 up to + 120°C
10 St	steel	- 10 up to + 120°C
20 St	stainless steel	- 20 up to + 200/250°C

- **Body:** brass: pressed part  
steel / stainless steel: die-pressed part
- **Surface:** steel phosphatized
- Internal stem thread
- Stem with cold rolled surface and non-rotating needle tip

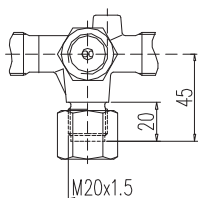
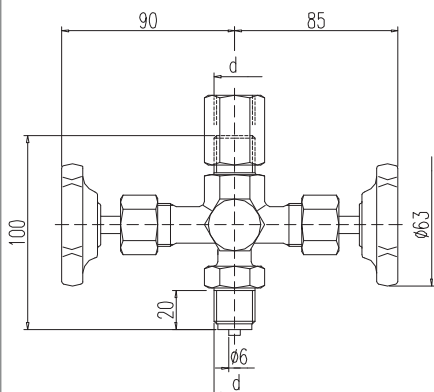
- 1) Can also be supplied for oxygen service. Please notice order instruction B 3!
- 2) Available with inspection certificate 3.1.B acc. to EN 10 204
- 3) Valves with PN 640 on request



Pressure gauge Double Valves similar **DIN 16272, test stud M20x1,5 - DVGW tested**

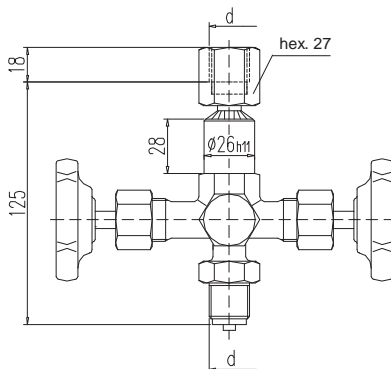
**Design A**

with adjusting nut  
DIN 16 283

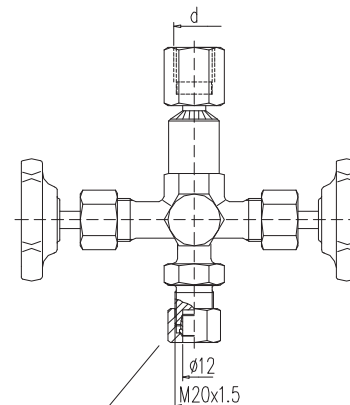


**Design B**

with swivel nut and shaft for  
pressure gauge support



**Design B - AS12**



tube fitting  
O. D. 12 mm  
line S

**D V G W - Registration**

DVGW-Register-No.

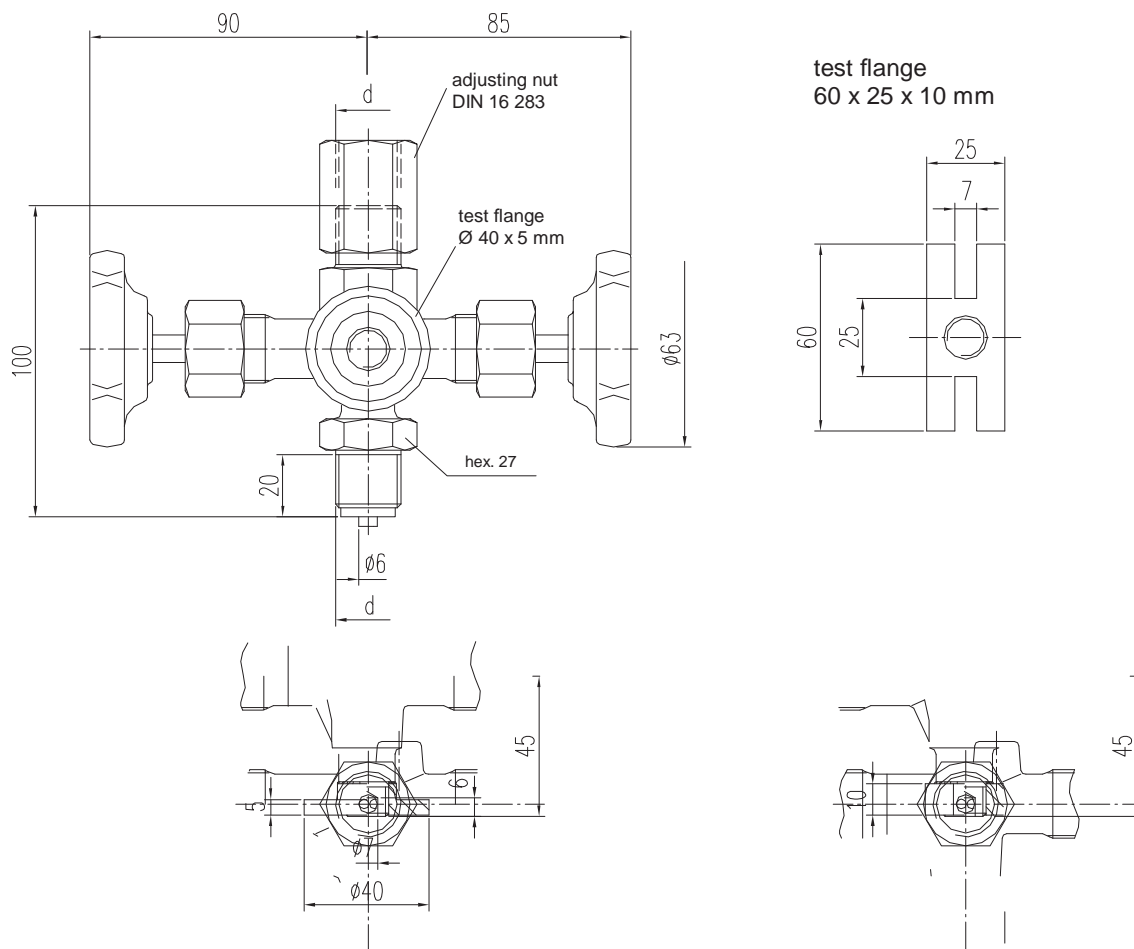
DG-4315BQ0226

PN	Connection thread d	Material	Part no.		
			Design A	Design B	Design B-AS12
100	G 1/2	brass steel st. st.	S004.80.000 S004.80.100 S004.80.200	S004.80.020 S004.80.120 S004.80.220	- S004.80.120.13 S004.80.220.13

Components	Brass	Steel	Stainless steel
	DIN - Material Number		
Body	brass	1.0460	1.4571
Valve stem	1.4104		1.4571
Needle tip	1.4104		1.4571
O-rings	FPM (Viton®)		
O-ring retainer	brass		1.4571
Union nut	galv. steel	steel	stainless steel
Swivel nut	brass	steel	1.4571
Adjusting nut	brass	steel	stainless steel
Handwheel	plastic		

- **Body:** brass: pressed part  
steel / stainless steel: die-pressed part
- **Surface:** steel phosphatized
- **Internal stem thread**
- **Stem with** colled rolled surface and non-rotating needle tip
- **Max. operating pressure:** 100 bar  
**Temperature:** - 5°C up to + 60°C
- **Basis of type examination:** DVGW VP 308
- **For all kinds of gas** in accordance with DVGW-list number G 260
- **Available with inspection certificate 3.1** acc. to EN 10 204

Pressure gauge Double Valves similar **DIN 16272, test flange**



PN	Connection thread d	Material	Part no. with test flange	
			Ø 40 x 5 mm	60 x 25 x 10 mm
250	G 1/2	brass	003.4.620.0000.0	003.4.610.0000.0
400		steel	003.4.621.0000.0	003.4.611.0000.0
400		st. st.	003.4.622.0000.0	003.4.612.0000.0

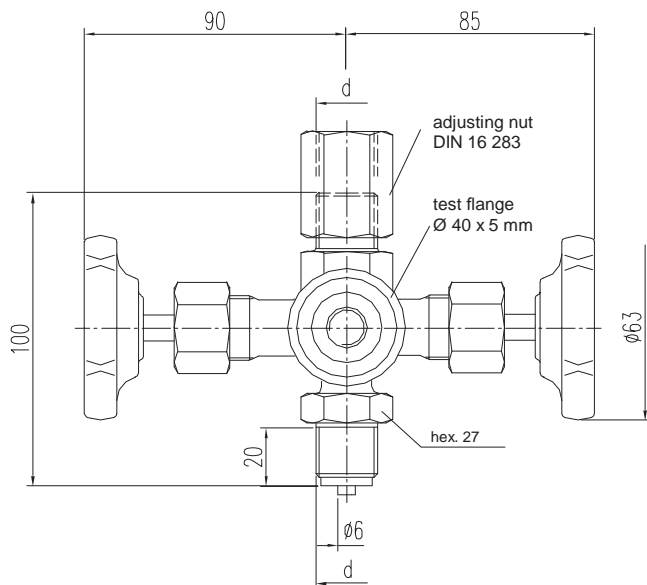
Components	Brass <sup>1)</sup>	Steel	Stainless steel <sup>1)</sup>
	DIN - Material Number		
Body <sup>2)</sup>	brass	1.0460	1.4571
Flange	brass	steel	1.4571
Valve stem	1.4104		1.4571
Needle tip	1.4104		1.4571
Packing	PTFE up to 200°C		
Union nut	steel	stainless steel	
Adjusting nut	steel	stainless steel	
Handwheel	plastic		

- **Body:** brass: pressed part  
steel / stainless steel: die-pressed part
- **Surface:** steel phosphatized
- Internal stem thread
- Stem with cold rolled surface and non-rotating needle tip

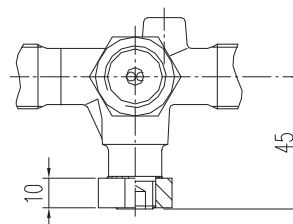
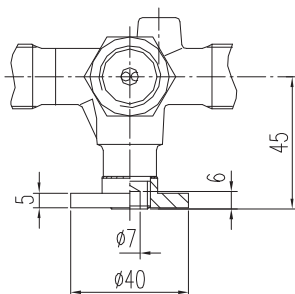
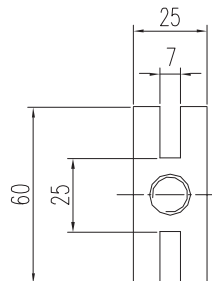
- 1) Can also be supplied for oxygen service. Please notice order instruction B 3!
- 2) Available with inspection certificate 3.1 acc. to EN 10 204



Pressure gauge Double Valves similar DIN 16272, test flange - DVGW tested



test flange  
60 x 25 x 10 mm



**D V G W - Registration**

DVGW-Register-No. DG-4315BQ0226

PN	Connection thread d	Material	Part no. with test flange	
			Ø 40 x 5 mm	60 x 25 x 10 mm
100	G 1/2	brass steel st. st.	S004.82.000	S004.81.000
			S004.82.100	S004.81.100
			S004.82.200	S004.81.200

Components	Brass	Steel	Stainless steel
	DIN - Material Number		
Body	brass	1.0460	1.4571
Flange	brass	steel	1.4571
Valve stem	1.4104		1.4571
Needle tip	1.4104		1.4571
O-rings	FPM (Viton®)		
O-ring retainer	brass		1.4571
Union nut	galv. steel	steel	stainless steel
Adjusting nut	brass	steel	stainless steel
Handwheel	plastic		

- Body: brass: pressed part  
steel / stainless steel: die-pressed part
- Surface: steel phosphatized
- Internal stem thread
- Stem with cold rolled surface and non-rotating needle tip
- Max. operating pressure: 100 bar  
Temperature: - 5°C up to + 60°C
- Basis of type examination: DVGW VP 308
- For all kinds of gas in accordance with DVGW-list number G 260
- Available with inspection certificate 3.1 acc. to EN 10 204